



Results

[Back to Survey Info](#)
[Back to Tabulate](#)

Filters Applied
NONE - ALL record selected

Number of Children in this School

Response	Num Responses	Raw %	Adjusted %	
1	78	50.65	50.65	
2	58	37.66	37.66	
3	14	9.09	9.09	
4	3	1.95	1.95	
5	1	0.65	0.65	
6	0	0.00	0.00	
7	0	0.00	0.00	
8	0	0.00	0.00	
No Response	0	0.00	0.00	

Total Responses : 154

Number of Children in your Household

Response	Num Responses	Raw %	Adjusted %	
1	19	12.34	12.42	
2	70	45.45	45.75	
3	44	28.57	28.76	
4	17	11.04	11.11	
5	1	0.65	0.65	
6	2	1.30	1.31	
7	0	0.00	0.00	
8	0	0.00	0.00	
9	0	0.00	0.00	
10	0	0.00	0.00	
No Response	1	0.65	0.65	

Total Responses : 154

Children's Grade Levels

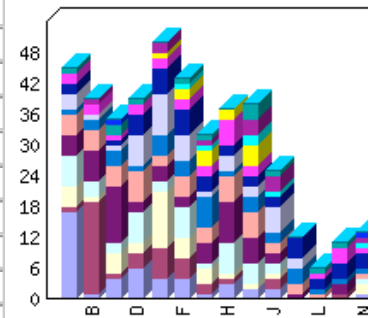
Response	Num Responses	Percent (%)	Color
K	34	22.08	A
1	31	20.13	B
2	27	17.53	C
3	28	18.18	D
4	33	21.43	E
5	29	18.83	F
6	22	14.29	G
7	25	16.23	H
8	22	14.29	I
9	12	7.79	J
10	8	5.19	K
11	3	1.95	L
12	5	3.25	M
College	6	3.90	N
Out of School	1	0.65	O

No Response	0	0.00	P
-------------	---	------	---

*Since this is a Many of Many, Totals may not add

Children's Grade Levels
[Expanded View]

	K	1	2	3	4	5	6	7	8	9	10	11	12	College	Out of School	No Response	Color
K	17	1	4	6	4	4	1	3	2	2	0	0	0	1	0	0	A
1	1	18	1	3	6	4	2	1	0	2	0	0	1	0	0	0	B
2	4	1	4	2	1	4	3	1	1	1	0	0	0	2	1	0	C
3	6	3	2	6	2	6	1	6	4	2	0	0	0	1	0	0	D
4	4	6	1	2	3	2	4	8	5	2	1	0	2	0	0	0	E
5	4	4	4	6	2	4	3	5	5	2	2	1	0	1	0	0	F
6	1	2	3	1	4	3	6	1	3	2	3	1	1	1	0	0	G
7	3	1	1	6	8	5	1	3	2	5	2	0	0	0	0	0	H
8	2	0	1	4	5	3	2	2	2	4	2	3	3	3	0	0	I
9	2	2	1	2	2	2	5	2	0	1	3	1	3	1	0	0	J
10	0	0	0	0	1	2	3	2	4	0	0	0	0	0	0	0	K
11	0	0	0	0	0	1	1	0	2	1	0	0	0	1	0	0	L
12	0	1	0	0	2	0	1	0	3	3	0	0	0	1	0	0	M
College	1	0	2	1	0	1	1	0	3	1	0	1	1	0	1	0	N
Out of School	0	0	1	0	0	0	0	0	0	0	0	0	0	1	0	0	O
NoResponse	0	0	0	0	0	0	0	0	0	0	0	0	0	0	0	0	P



Total Responses : 154

1. I feel welcome at this school.

Response	Num Responses	Raw %	Adjusted %	
Strongly Agree	79	51.30	51.63	
Agree	66	42.86	43.14	
Disagree	7	4.55	4.58	
Strongly Disagree	0	0.00	0.00	
Does Not Apply or Do Not Know	1	0.65	0.65	
No Response	1	0.65		

Total Responses : 154

2. I feel welcome in my child's classrooms.

Response	Num Responses	Raw %	Adjusted %	
Strongly Agree	79	51.30	51.30	
Agree	66	42.86	42.86	
Disagree	7	4.55	4.55	
Strongly Disagree	1	0.65	0.65	
Does Not Apply or Do Not Know	1	0.65	0.65	
No Response	0	0.00		

Total Responses : 154

3. My child is safe at this school.

Response	Num Responses	Raw %	Adjusted %	
Strongly Agree	89	57.79	57.79	
Agree	65	42.21	42.21	
Disagree	0	0.00	0.00	
Strongly Disagree	0	0.00	0.00	
Does Not Apply or Do Not Know	0	0.00	0.00	
No Response	0	0.00		

Total Responses : 154

4. I am satisfied with the way that administration handles my problems.

Response	Num Responses	Raw %	Adjusted %	
Strongly Agree	54	35.06	35.29	
Agree	66	42.86	43.14	
Disagree	6	3.90	3.92	
Strongly Disagree	2	1.30	1.31	
Does Not Apply or Do Not Know	25	16.23	16.34	
No Response	1	0.65		

Total Responses : 154

5. I can count on my child's teachers to listen to my side of the story and be fair.

Response	Num Responses	Raw %	Adjusted %	
Strongly Agree	56	36.36	36.36	
Agree	74	48.05	48.05	
Disagree	7	4.55	4.55	
Strongly Disagree	1	0.65	0.65	
Does Not Apply or Do Not Know	16	10.39	10.39	
No Response	0	0.00		

Total Responses : 154

6. I am treated with respect by my child's teachers.

Response	Num Responses	Raw %	Adjusted %	
Strongly Agree	89	57.79	57.79	
Agree	61	39.61	39.61	
Disagree	4	2.60	2.60	
Strongly Disagree	0	0.00	0.00	
Does Not Apply or Do Not Know	0	0.00	0.00	
No Response	0	0.00		

Total Responses : 154

7. I am treated with respect by Mr. Brownfield.

Response	Num Responses	Raw %	Adjusted %	
Strongly Agree	83	53.90	54.25	
Agree	43	27.92	28.10	
Disagree	7	4.55	4.58	
Strongly Disagree	1	0.65	0.65	
Does Not Apply or Do Not Know	19	12.34	12.42	
No Response	1	0.65		

Total Responses : 154

8. I am treated with respect by Mr. Carner.

Response	Num Responses	Raw %	Adjusted %	
Strongly Agree	67	43.51	43.51	
Agree	45	29.22	29.22	
Disagree	0	0.00	0.00	
Strongly Disagree	0	0.00	0.00	

Does Not Apply or Do Not Know	42	27.27	27.27	
No Response	0	0.00		

Total Responses : 154

9. I am treated with respect by the people who work in the cafeteria.

Response	Num Responses	Raw %	Adjusted %	
Strongly Agree	24	15.58	15.58	
Agree	16	10.39	10.39	
Disagree	2	1.30	1.30	
Strongly Disagree	1	0.65	0.65	
Does Not Apply or Do Not Know	111	72.08	72.08	
No Response	0	0.00		

Total Responses : 154

10. I am treated with respect by the people who work in the office.

Response	Num Responses	Raw %	Adjusted %	
Strongly Agree	98	63.64	64.47	
Agree	48	31.17	31.58	
Disagree	3	1.95	1.97	
Strongly Disagree	0	0.00	0.00	
Does Not Apply or Do Not Know	3	1.95	1.97	
No Response	2	1.30		

Total Responses : 154

11. I am treated with respect by the school nurses.

Response	Num Responses	Raw %	Adjusted %	
Strongly Agree	74	48.05	48.68	
Agree	38	24.68	25.00	
Disagree	2	1.30	1.32	
Strongly Disagree	0	0.00	0.00	
Does Not Apply or Do Not Know	38	24.68	25.00	
No Response	2	1.30		

Total Responses : 154

12. I am treated with respect by the teachers in the mobile unit.

Response	Num Responses	Raw %	Adjusted %	
Strongly Agree	20	12.99	12.99	
Agree	15	9.74	9.74	
Disagree	0	0.00	0.00	
Strongly Disagree	0	0.00	0.00	
Does Not Apply or Do Not Know	119	77.27	77.27	
No Response	0	0.00		

Total Responses : 154

13. I am treated with respect by the school psychologist (Dr. Joe Rocchio).

Response	Num Responses	Raw %	Adjusted %	
Strongly Agree	21	13.64	13.64	
Agree	7	4.55	4.55	
Disagree	1	0.65	0.65	
Strongly Disagree	1	0.65	0.65	
Does Not Apply or Do Not Know	124	80.52	80.52	
No Response	0	0.00		

Total Responses : 154

14. I am treated with respect by the classroom aides.

Response	Num Responses	Raw %	Adjusted %	
Strongly Agree	58	37.66	37.66	

Agree	52	33.77	33.77	
Disagree	0	0.00	0.00	
Strongly Disagree	0	0.00	0.00	
Does Not Apply or Do Not Know	44	28.57	28.57	
No Response	0	0.00		

Total Responses : 154

15. I am treated with respect by the specialist teachers (Music, Art, Gym, Spanish, Computer, Library, Vitale).

Response	Num Responses	Raw %	Adjusted %	
Strongly Agree	50	32.47	32.68	
Agree	56	36.36	36.60	
Disagree	3	1.95	1.96	
Strongly Disagree	0	0.00	0.00	
Does Not Apply or Do Not Know	44	28.57	28.76	
No Response	1	0.65		

Total Responses : 154

16. I am treated with respect by the students at this school.

Response	Num Responses	Raw %	Adjusted %	
Strongly Agree	46	29.87	30.26	
Agree	98	63.64	64.47	
Disagree	4	2.60	2.63	
Strongly Disagree	2	1.30	1.32	
Does Not Apply or Do Not Know	2	1.30	1.32	
No Response	2	1.30		

Total Responses : 154

17. I am happy with the way that students behave in class.

Response	Num Responses	Raw %	Adjusted %	
Strongly Agree	37	24.03	24.50	
Agree	88	57.14	58.28	
Disagree	6	3.90	3.97	
Strongly Disagree	2	1.30	1.32	
Does Not Apply or Do Not Know	18	11.69	11.92	
No Response	3	1.95		

Total Responses : 154

18. I am happy with the way that students behave in school.

Response	Num Responses	Raw %	Adjusted %	
Strongly Agree	32	20.78	20.92	
Agree	94	61.04	61.44	
Disagree	10	6.49	6.54	
Strongly Disagree	2	1.30	1.31	
Does Not Apply or Do Not Know	15	9.74	9.80	
No Response	1	0.65		

Total Responses : 154

19. I am happy with the way that school rules are enforced.

Response	Num Responses	Raw %	Adjusted %	
Strongly Agree	47	30.52	30.52	
Agree	77	50.00	50.00	
Disagree	16	10.39	10.39	
Strongly Disagree	3	1.95	1.95	
Does Not Apply or Do Not Know	11	7.14	7.14	
No Response	0	0.00		

Total Responses : 154

20. I am happy with how well students do what is expected without being told.

Response	Num Responses	Raw %	Adjusted %	
Strongly Agree	30	19.48	19.48	
Agree	88	57.14	57.14	
Disagree	9	5.84	5.84	
Strongly Disagree	2	1.30	1.30	
Does Not Apply or Do Not Know	25	16.23	16.23	
No Response	0	0.00		

Total Responses : 154

21. I like this school.

Response	Num Responses	Raw %	Adjusted %	
Strongly Agree	94	61.04	61.84	
Agree	57	37.01	37.50	
Disagree	1	0.65	0.66	
Strongly Disagree	0	0.00	0.00	
Does Not Apply or Do Not Know	0	0.00	0.00	
No Response	2	1.30		

Total Responses : 154

22. I think that this is a good school.

Response	Num Responses	Raw %	Adjusted %	
Strongly Agree	101	65.58	66.01	
Agree	51	33.12	33.33	
Disagree	1	0.65	0.65	
Strongly Disagree	0	0.00	0.00	
Does Not Apply or Do Not Know	0	0.00	0.00	
No Response	1	0.65		

Total Responses : 154

23. I am happy with the way students treat each other.

Response	Num Responses	Raw %	Adjusted %	
Strongly Agree	15	9.74	9.80	
Agree	99	64.29	64.71	
Disagree	28	18.18	18.30	
Strongly Disagree	4	2.60	2.61	
Does Not Apply or Do Not Know	7	4.55	4.58	
No Response	1	0.65		

Total Responses : 154

24. It's easy for my child to make friends at this school.

Response	Num Responses	Raw %	Adjusted %	
Strongly Agree	42	27.27	27.45	
Agree	95	61.69	62.09	
Disagree	16	10.39	10.46	
Strongly Disagree	0	0.00	0.00	
Does Not Apply or Do Not Know	0	0.00	0.00	
No Response	1	0.65		

Total Responses : 154

25. My child is involved in a St. Albert the Great School extra-curricular activity (music, drama, sports of the Pen, yearbook, Geography Bee, Classroom of Champions, etc.).

Response	Num Responses	Raw %	Adjusted %	
Yes	110	71.43	71.43	
No	44	28.57	28.57	
No Response	0	0.00		

Total Responses : 154

26. I am happy with the number of extra-curricular activities my child can participate in.

Response	Num Responses	Raw %	Adjusted %	
Strongly Agree	54	35.06	35.06	
Agree	70	45.45	45.45	
Disagree	13	8.44	8.44	
Strongly Disagree	0	0.00	0.00	
Does Not Apply or Do Not Know	17	11.04	11.04	
No Response	0	0.00		

Total Responses : 154

27. I am happy with the amount that students can plan and take part in school events and activities.

Response	Num Responses	Raw %	Adjusted %	
Strongly Agree	46	29.87	30.26	
Agree	82	53.25	53.95	
Disagree	8	5.19	5.26	
Strongly Disagree	0	0.00	0.00	
Does Not Apply or Do Not Know	16	10.39	10.53	
No Response	2	1.30		

Total Responses : 154

28. My child's classes challenge him/her.

Response	Num Responses	Raw %	Adjusted %	
Strongly Agree	59	38.31	38.31	
Agree	84	54.55	54.55	
Disagree	8	5.19	5.19	
Strongly Disagree	2	1.30	1.30	
Does Not Apply or Do Not Know	1	0.65	0.65	
No Response	0	0.00		

Total Responses : 154

29. My child's classes meet his/her needs.

Response	Num Responses	Raw %	Adjusted %	
Strongly Agree	57	37.01	37.01	
Agree	79	51.30	51.30	
Disagree	16	10.39	10.39	
Strongly Disagree	2	1.30	1.30	
Does Not Apply or Do Not Know	0	0.00	0.00	
No Response	0	0.00		

Total Responses : 154

30. My child has opportunities to choose his/her own projects.

Response	Num Responses	Raw %	Adjusted %	
Strongly Agree	25	16.23	16.23	
Agree	73	47.40	47.40	
Disagree	18	11.69	11.69	
Strongly Disagree	4	2.60	2.60	
Does Not Apply or Do Not Know	34	22.08	22.08	
No Response	0	0.00		

Total Responses : 154

31. My child feels like he/she is in charge of what he/she learns.

Response	Num Responses	Raw %	Adjusted %	
Strongly Agree	15	9.74	9.87	
Agree	72	46.75	47.37	
Disagree	29	18.83	19.08	
Strongly Disagree	2	1.30	1.32	

Does Not Apply or Do Not Know	34	22.08	22.37		
No Response	2	1.30			

Total Responses : 154

32. My child's teachers make an effort to show him/her another way to learn the material if he/she does understand the first time.

Response	Num Responses	Raw %	Adjusted %		20	40	60	80
Strongly Agree	30	19.48	19.48					
Agree	66	42.86	42.86					
Disagree	19	12.34	12.34					
Strongly Disagree	3	1.95	1.95					
Does Not Apply or Do Not Know	36	23.38	23.38					
No Response	0	0.00						

Total Responses : 154

33. My child understands how to apply what he/she learns at school to real-life situations.

Response	Num Responses	Raw %	Adjusted %		20	40	60	80
Strongly Agree	32	20.78	20.92					
Agree	100	64.94	65.36					
Disagree	13	8.44	8.50					
Strongly Disagree	1	0.65	0.65					
Does Not Apply or Do Not Know	7	4.55	4.58					
No Response	1	0.65						

Total Responses : 154

34. My child feels successful at this school.

Response	Num Responses	Raw %	Adjusted %		20	40	60	80
Strongly Agree	56	36.36	36.36					
Agree	86	55.84	55.84					
Disagree	9	5.84	5.84					
Strongly Disagree	0	0.00	0.00					
Does Not Apply or Do Not Know	3	1.95	1.95					
No Response	0	0.00						

Total Responses : 154

35. This school is preparing my child for high school.

Response	Num Responses	Raw %	Adjusted %		20	40	60	80
Strongly Agree	53	34.42	34.42					
Agree	65	42.21	42.21					
Disagree	12	7.79	7.79					
Strongly Disagree	1	0.65	0.65					
Does Not Apply or Do Not Know	23	14.94	14.94					
No Response	0	0.00						

Total Responses : 154

36. Homework helps my child to learn.

Response	Num Responses	Raw %	Adjusted %		20	40	60	80
Strongly Agree	58	37.66	38.16					
Agree	83	53.90	54.61					
Disagree	9	5.84	5.92					
Strongly Disagree	2	1.30	1.32					
Does Not Apply or Do Not Know	0	0.00	0.00					
No Response	2	1.30						

Total Responses : 154

37. There is an appropriate amount of project work.

Response	Num Responses	Raw %	Adjusted %		20	40	60	80
Strongly Agree	30	19.48	19.48					

Agree	98	63.64	63.64	
Disagree	7	4.55	4.55	
Strongly Disagree	1	0.65	0.65	
Does Not Apply or Do Not Know	18	11.69	11.69	
No Response	0	0.00		

Total Responses : 154

38. Projects require too much help from parents.

Response	Num Responses	Raw %	Adjusted %	
Strongly Agree	15	9.74	9.74	
Agree	25	16.23	16.23	
Disagree	84	54.55	54.55	
Strongly Disagree	8	5.19	5.19	
Does Not Apply or Do Not Know	22	14.29	14.29	
No Response	0	0.00		

Total Responses : 154

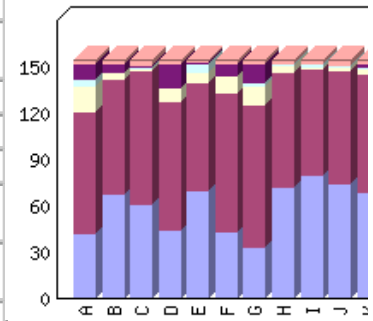
39. This school encourages my child to work to the best of his/her ability.

Response	Num Responses	Raw %	Adjusted %	
Strongly Agree	58	37.66	37.66	
Agree	84	54.55	54.55	
Disagree	7	4.55	4.55	
Strongly Disagree	2	1.30	1.30	
Does Not Apply or Do Not Know	3	1.95	1.95	
No Response	0	0.00		

Total Responses : 154

40. My child has learned new and useful things in:

Category	Strongly Agree	Agree	Disagree	Strongly Disagree	Does Not Apply or Do Not Know	NR	Legend
Art	42	79	16	5	10	2	A
Computer	67	75	4	0	6	2	B
Language Arts / English	61	86	1	1	2	3	C
Library Skills	44	83	9	0	16	2	D
Mathematics	69	71	6	6	1	1	E
Music	43	90	11	0	8	2	F
Physical Education	33	92	12	2	13	2	G
Reading / Literature	72	74	5	1	0	2	H
Religion	80	68	2	2	0	2	I
Science / Health	74	73	2	2	0	3	J
Social Studies	68	77	3	1	3	2	K
Spanish	21	62	9	4	55	3	L
Color							



Total Responses : 154

Art

Response	Num Responses	Raw %	Adjusted %	
Strongly Agree	42	27.27	27.63	
Agree	79	51.30	51.97	
Disagree	16	10.39	10.53	
Strongly Disagree	5	3.25	3.29	

Does Not Apply or Do Not Know	10	6.49	6.58	
No Response	2	1.30		

Total Responses : 154

Computer

Response	Num Responses	Raw %	Adjusted %	
Strongly Agree	67	43.51	44.08	
Agree	75	48.70	49.34	
Disagree	4	2.60	2.63	
Strongly Disagree	0	0.00	0.00	
Does Not Apply or Do Not Know	6	3.90	3.95	
No Response	2	1.30		

Total Responses : 154

Language Arts / English

Response	Num Responses	Raw %	Adjusted %	
Strongly Agree	61	39.61	40.40	
Agree	86	55.84	56.95	
Disagree	1	0.65	0.66	
Strongly Disagree	1	0.65	0.66	
Does Not Apply or Do Not Know	2	1.30	1.32	
No Response	3	1.95		

Total Responses : 154

Library Skills

Response	Num Responses	Raw %	Adjusted %	
Strongly Agree	44	28.57	28.95	
Agree	83	53.90	54.61	
Disagree	9	5.84	5.92	
Strongly Disagree	0	0.00	0.00	
Does Not Apply or Do Not Know	16	10.39	10.53	
No Response	2	1.30		

Total Responses : 154

Mathematics

Response	Num Responses	Raw %	Adjusted %	
Strongly Agree	69	44.81	45.10	
Agree	71	46.10	46.41	
Disagree	6	3.90	3.92	
Strongly Disagree	6	3.90	3.92	
Does Not Apply or Do Not Know	1	0.65	0.65	
No Response	1	0.65		

Total Responses : 154

Music

Response	Num Responses	Raw %	Adjusted %	
Strongly Agree	43	27.92	28.29	
Agree	90	58.44	59.21	
Disagree	11	7.14	7.24	
Strongly Disagree	0	0.00	0.00	
Does Not Apply or Do Not Know	8	5.19	5.26	
No Response	2	1.30		

Total Responses : 154

Physical Education

Response	Num Responses	Raw %	Adjusted %	
Strongly Agree	33	21.43	21.71	

Agree	92	59.74	60.53	
Disagree	12	7.79	7.89	
Strongly Disagree	2	1.30	1.32	
Does Not Apply or Do Not Know	13	8.44	8.55	
No Response	2	1.30		

Total Responses : 154

Reading / Literature

Response	Num Responses	Raw %	Adjusted %	
Strongly Agree	72	46.75	47.37	
Agree	74	48.05	48.68	
Disagree	5	3.25	3.29	
Strongly Disagree	1	0.65	0.66	
Does Not Apply or Do Not Know	0	0.00	0.00	
No Response	2	1.30		

Total Responses : 154

Religion

Response	Num Responses	Raw %	Adjusted %	
Strongly Agree	80	51.95	52.63	
Agree	68	44.16	44.74	
Disagree	2	1.30	1.32	
Strongly Disagree	2	1.30	1.32	
Does Not Apply or Do Not Know	0	0.00	0.00	
No Response	2	1.30		

Total Responses : 154

Science / Health

Response	Num Responses	Raw %	Adjusted %	
Strongly Agree	74	48.05	49.01	
Agree	73	47.40	48.34	
Disagree	2	1.30	1.32	
Strongly Disagree	2	1.30	1.32	
Does Not Apply or Do Not Know	0	0.00	0.00	
No Response	3	1.95		

Total Responses : 154

Social Studies

Response	Num Responses	Raw %	Adjusted %	
Strongly Agree	68	44.16	44.74	
Agree	77	50.00	50.66	
Disagree	3	1.95	1.97	
Strongly Disagree	1	0.65	0.66	
Does Not Apply or Do Not Know	3	1.95	1.97	
No Response	2	1.30		

Total Responses : 154

Spanish

Response	Num Responses	Raw %	Adjusted %	
Strongly Agree	21	13.64	13.91	
Agree	62	40.26	41.06	
Disagree	9	5.84	5.96	
Strongly Disagree	4	2.60	2.65	
Does Not Apply or Do Not Know	55	35.71	36.42	
No Response	3	1.95		

Total Responses : 154

41. It is easy for my child to use the school library.

Response	Num Responses	Raw %	Adjusted %	20	40	60	80
Strongly Agree	49	31.82	31.82				
Agree	89	57.79	57.79				
Disagree	2	1.30	1.30				
Strongly Disagree	0	0.00	0.00				
Does Not Apply or Do Not Know	14	9.09	9.09				
No Response	0	0.00					

Total Responses : 154

42. It is easy for my child to use the school computer lab.

Response	Num Responses	Raw %	Adjusted %	20	40	60	80
Strongly Agree	45	29.22	29.41				
Agree	84	54.55	54.90				
Disagree	1	0.65	0.65				
Strongly Disagree	0	0.00	0.00				
Does Not Apply or Do Not Know	23	14.94	15.03				
No Response	1	0.65					

Total Responses : 154

43. I am happy with the selection of books and other materials in the school library.

Response	Num Responses	Raw %	Adjusted %	20	40	60	80
Strongly Agree	35	22.73	22.73				
Agree	94	61.04	61.04				
Disagree	15	9.74	9.74				
Strongly Disagree	1	0.65	0.65				
Does Not Apply or Do Not Know	9	5.84	5.84				
No Response	0	0.00					

Total Responses : 154

44. The school grounds are kept clean.

Response	Num Responses	Raw %	Adjusted %	20	40	60	80
Strongly Agree	99	64.29	64.71				
Agree	53	34.42	34.64				
Disagree	1	0.65	0.65				
Strongly Disagree	0	0.00	0.00				
Does Not Apply or Do Not Know	0	0.00	0.00				
No Response	1	0.65					

Total Responses : 154

45. The school buildings are kept clean and in good repair.

Response	Num Responses	Raw %	Adjusted %	20	40	60	80
Strongly Agree	98	63.64	63.64				
Agree	54	35.06	35.06				
Disagree	2	1.30	1.30				
Strongly Disagree	0	0.00	0.00				
Does Not Apply or Do Not Know	0	0.00	0.00				
No Response	0	0.00					

Total Responses : 154

46. The classroom supplies and materials help my child learn.

Response	Num Responses	Raw %	Adjusted %	20	40	60	80
Strongly Agree	64	41.56	41.56				
Agree	83	53.90	53.90				
Disagree	0	0.00	0.00				
Strongly Disagree	0	0.00	0.00				

Does Not Apply or Do Not Know	7	4.55	4.55	
No Response	0	0.00		

Total Responses : 154

47. In general, I am happy about the school buildings, supplies, and upkeep at this school.

Response	Num Responses	Raw %	Adjusted %	
Strongly Agree	90	58.44	58.44	
Agree	62	40.26	40.26	
Disagree	2	1.30	1.30	
Strongly Disagree	0	0.00	0.00	
Does Not Apply or Do Not Know	0	0.00	0.00	
No Response	0	0.00		

Total Responses : 154

48. Students of this school obtain a good understanding of their Catholic faith.

Response	Num Responses	Raw %	Adjusted %	
Strongly Agree	86	55.84	56.21	
Agree	60	38.96	39.22	
Disagree	6	3.90	3.92	
Strongly Disagree	0	0.00	0.00	
Does Not Apply or Do Not Know	1	0.65	0.65	
No Response	1	0.65		

Total Responses : 154

49. Being a Catholic school is important to everyone at this school: students, parents, faculty and administration.

Response	Num Responses	Raw %	Adjusted %	
Strongly Agree	92	59.74	60.13	
Agree	48	31.17	31.37	
Disagree	9	5.84	5.88	
Strongly Disagree	0	0.00	0.00	
Does Not Apply or Do Not Know	4	2.60	2.61	
No Response	1	0.65		

Total Responses : 154

50. Our school is preparing students to be good Catholics.

Response	Num Responses	Raw %	Adjusted %	
Strongly Agree	83	53.90	54.25	
Agree	61	39.61	39.87	
Disagree	5	3.25	3.27	
Strongly Disagree	1	0.65	0.65	
Does Not Apply or Do Not Know	3	1.95	1.96	
No Response	1	0.65		

Total Responses : 154

51. The school liturgies are helpful and meaningful for the students.

Response	Num Responses	Raw %	Adjusted %	
Strongly Agree	62	40.26	40.52	
Agree	70	45.45	45.75	
Disagree	7	4.55	4.58	
Strongly Disagree	4	2.60	2.61	
Does Not Apply or Do Not Know	10	6.49	6.54	
No Response	1	0.65		

Total Responses : 154

52. At this school, students have the opportunity to talk to adults about their beliefs and values.

Response	Num Responses	Raw %	Adjusted %	
Strongly Agree	40	25.97	25.97	

Agree	60	38.96	38.96	
Disagree	12	7.79	7.79	
Strongly Disagree	1	0.65	0.65	
Does Not Apply or Do Not Know	41	26.62	26.62	
No Response	0	0.00		

Total Responses : 154

53. Religion class is seen as important by the students of this school.

Response	Num Responses	Raw %	Adjusted %	
Strongly Agree	43	27.92	27.92	
Agree	77	50.00	50.00	
Disagree	12	7.79	7.79	
Strongly Disagree	2	1.30	1.30	
Does Not Apply or Do Not Know	20	12.99	12.99	
No Response	0	0.00		

Total Responses : 154

54. Religion class is seen as important by the parents of this school.

Response	Num Responses	Raw %	Adjusted %	
Strongly Agree	72	46.75	47.37	
Agree	69	44.81	45.39	
Disagree	5	3.25	3.29	
Strongly Disagree	0	0.00	0.00	
Does Not Apply or Do Not Know	6	3.90	3.95	
No Response	2	1.30		

Total Responses : 154

55. Religion class is seen as important by the faculty of this school.

Response	Num Responses	Raw %	Adjusted %	
Strongly Agree	83	53.90	53.90	
Agree	62	40.26	40.26	
Disagree	1	0.65	0.65	
Strongly Disagree	0	0.00	0.00	
Does Not Apply or Do Not Know	8	5.19	5.19	
No Response	0	0.00		

Total Responses : 154

56. I believe that the school follows its' mission.

Response	Num Responses	Raw %	Adjusted %	
Strongly Agree	60	38.96	38.96	
Agree	82	53.25	53.25	
Disagree	3	1.95	1.95	
Strongly Disagree	0	0.00	0.00	
Does Not Apply or Do Not Know	9	5.84	5.84	
No Response	0	0.00		

Total Responses : 154

57. I am pleased with the overall direction of the school.

Response	Num Responses	Raw %	Adjusted %	
Strongly Agree	66	42.86	42.86	
Agree	79	51.30	51.30	
Disagree	7	4.55	4.55	
Strongly Disagree	0	0.00	0.00	
Does Not Apply or Do Not Know	2	1.30	1.30	
No Response	0	0.00		

Total Responses : 154

58. I am aware that the school is currently creating a school improvement plan.

Response	Num Responses	Raw %	Adjusted %	
Strongly Agree	36	23.38	23.38	
Agree	78	50.65	50.65	
Disagree	4	2.60	2.60	
Strongly Disagree	3	1.95	1.95	
Does Not Apply or Do Not Know	33	21.43	21.43	
No Response	0	0.00		

Total Responses : 154

59. My child evaluates his/her own written work according to a teacher provided rubric.

Response	Num Responses	Raw %	Adjusted %	
Strongly Agree	7	4.55	4.58	
Agree	40	25.97	26.14	
Disagree	16	10.39	10.46	
Strongly Disagree	4	2.60	2.61	
Does Not Apply or Do Not Know	86	55.84	56.21	
No Response	1	0.65		

Total Responses : 154

60. My child knows how to edit written work.

Response	Num Responses	Raw %	Adjusted %	
Strongly Agree	10	6.49	6.58	
Agree	70	45.45	46.05	
Disagree	23	14.94	15.13	
Strongly Disagree	6	3.90	3.95	
Does Not Apply or Do Not Know	43	27.92	28.29	
No Response	2	1.30		

Total Responses : 154

61. My child edits other classmate's written work.

Response	Num Responses	Raw %	Adjusted %	
Strongly Agree	8	5.19	5.19	
Agree	46	29.87	29.87	
Disagree	11	7.14	7.14	
Strongly Disagree	6	3.90	3.90	
Does Not Apply or Do Not Know	83	53.90	53.90	
No Response	0	0.00		

Total Responses : 154

62. My child selects work to be placed in his/her writing portfolio.

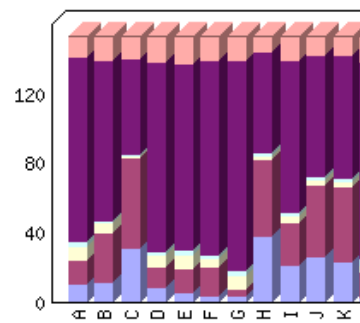
Response	Num Responses	Raw %	Adjusted %	
Strongly Agree	7	4.55	4.58	
Agree	33	21.43	21.57	
Disagree	5	3.25	3.27	
Strongly Disagree	2	1.30	1.31	
Does Not Apply or Do Not Know	106	68.83	69.28	
No Response	1	0.65		

Total Responses : 154

63. This school year, my child has used the writing process and completed a final written product in:

Category	Strongly Agree	Agree	Disagree	Strongly Disagree	Does Not Apply or Do Not Know	NR Legend

Art	10	14	8	3	107	12	A
Computer	11	29	6	1	93	14	B
Language Arts / English	31	52	1	1	56	13	C
Library Skills	8	12	7	2	110	15	D
Mathematics	5	14	8	3	108	16	E
Music	3	17	5	2	113	14	F
Physical Education	3	4	8	3	122	14	G
Reading / Literature	38	44	2	2	59	9	H
Religion	21	25	4	2	88	14	I
Science	26	42	3	2	70	11	J
Social Studies	23	44	3	2	71	11	K
Spanish	2	15	4	4	114	15	L
64. My child knows and understands what Catholic social justice teachings are.	14	52	17	4	65	2	M
Color							



Total Responses : 154

Art

Response	Num Responses	Raw %	Adjusted %	
Strongly Agree	10	6.49	7.04	<input type="text"/>
Agree	14	9.09	9.86	<input type="text"/>
Disagree	8	5.19	5.63	<input type="text"/>
Strongly Disagree	3	1.95	2.11	<input type="text"/>
Does Not Apply or Do Not Know	107	69.48	75.35	<input type="text"/>
No Response	12	7.79		<input type="text"/>

Total Responses : 154

Computer

Response	Num Responses	Raw %	Adjusted %	
Strongly Agree	11	7.14	7.86	<input type="text"/>
Agree	29	18.83	20.71	<input type="text"/>
Disagree	6	3.90	4.29	<input type="text"/>
Strongly Disagree	1	0.65	0.71	<input type="text"/>
Does Not Apply or Do Not Know	93	60.39	66.43	<input type="text"/>
No Response	14	9.09		<input type="text"/>

Total Responses : 154

Language Arts / English

Response	Num Responses	Raw %	Adjusted %	
Strongly Agree	31	20.13	21.99	<input type="text"/>
Agree	52	33.77	36.88	<input type="text"/>
Disagree	1	0.65	0.71	<input type="text"/>
Strongly Disagree	1	0.65	0.71	<input type="text"/>
Does Not Apply or Do Not Know	56	36.36	39.72	<input type="text"/>
No Response	13	8.44		<input type="text"/>

Total Responses : 154

Library Skills

Response	Num Responses	Raw %	Adjusted %	
Strongly Agree	8	5.19	5.76	<input type="text"/>

Agree	12	7.79	8.63	
Disagree	7	4.55	5.04	
Strongly Disagree	2	1.30	1.44	
Does Not Apply or Do Not Know	110	71.43	79.14	
No Response	15	9.74		

Total Responses : 154

Mathematics

Response	Num Responses	Raw %	Adjusted %	
Strongly Agree	5	3.25	3.62	
Agree	14	9.09	10.14	
Disagree	8	5.19	5.80	
Strongly Disagree	3	1.95	2.17	
Does Not Apply or Do Not Know	108	70.13	78.26	
No Response	16	10.39		

Total Responses : 154

Music

Response	Num Responses	Raw %	Adjusted %	
Strongly Agree	3	1.95	2.14	
Agree	17	11.04	12.14	
Disagree	5	3.25	3.57	
Strongly Disagree	2	1.30	1.43	
Does Not Apply or Do Not Know	113	73.38	80.71	
No Response	14	9.09		

Total Responses : 154

Physical Education

Response	Num Responses	Raw %	Adjusted %	
Strongly Agree	3	1.95	2.14	
Agree	4	2.60	2.86	
Disagree	8	5.19	5.71	
Strongly Disagree	3	1.95	2.14	
Does Not Apply or Do Not Know	122	79.22	87.14	
No Response	14	9.09		

Total Responses : 154

Reading / Literature

Response	Num Responses	Raw %	Adjusted %	
Strongly Agree	38	24.68	26.21	
Agree	44	28.57	30.34	
Disagree	2	1.30	1.38	
Strongly Disagree	2	1.30	1.38	
Does Not Apply or Do Not Know	59	38.31	40.69	
No Response	9	5.84		

Total Responses : 154

Religion

Response	Num Responses	Raw %	Adjusted %	
Strongly Agree	21	13.64	15.00	
Agree	25	16.23	17.86	
Disagree	4	2.60	2.86	
Strongly Disagree	2	1.30	1.43	
Does Not Apply or Do Not Know	88	57.14	62.86	
No Response	14	9.09		

Total Responses : 154

Science

Response	Num Responses	Raw %	Adjusted %	20	40	60	80
Strongly Agree	26	16.88	18.18				
Agree	42	27.27	29.37				
Disagree	3	1.95	2.10				
Strongly Disagree	2	1.30	1.40				
Does Not Apply or Do Not Know	70	45.45	48.95				
No Response	11	7.14					

Total Responses : 154

Social Studies

Response	Num Responses	Raw %	Adjusted %	20	40	60	80
Strongly Agree	23	14.94	16.08				
Agree	44	28.57	30.77				
Disagree	3	1.95	2.10				
Strongly Disagree	2	1.30	1.40				
Does Not Apply or Do Not Know	71	46.10	49.65				
No Response	11	7.14					

Total Responses : 154

Spanish

Response	Num Responses	Raw %	Adjusted %	20	40	60	80
Strongly Agree	2	1.30	1.44				
Agree	15	9.74	10.79				
Disagree	4	2.60	2.88				
Strongly Disagree	4	2.60	2.88				
Does Not Apply or Do Not Know	114	74.03	82.01				
No Response	15	9.74					

Total Responses : 154

64. My child knows and understands what Catholic social justice teachings are.

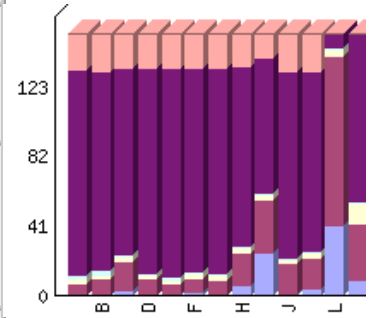
Response	Num Responses	Raw %	Adjusted %	20	40	60	80
Strongly Agree	14	9.09	9.21				
Agree	52	33.77	34.21				
Disagree	17	11.04	11.18				
Strongly Disagree	4	2.60	2.63				
Does Not Apply or Do Not Know	65	42.21	42.76				
No Response	2	1.30					

Total Responses : 154

65. My child discusses Catholic social justice principles in:

Category	Strongly Agree	Agree	Disagree	Strongly Disagree	Does Not Apply or Do Not Know	NR	Legend
Art	0	7	3	2	121	21	A
Computer	0	10	2	3	117	22	B
Language Arts / English	3	17	3	1	110	20	C
Library Skills	0	10	2	1	121	20	D
Mathematics	1	6	2	2	123	20	E
Music	2	8	3	1	120	20	F
Physical Education	0	9	3	1	121	20	G

Reading / Literature	6	19	3	1	106	19	H
Religion	25	31	3	1	80	14	I
Science	1	18	2	1	110	22	J
Social Studies	4	18	3	1	106	22	K
66. My child believes serving others is an important part of being Catholic.	41	100	4	1	8	0	L
67. The staff at our school listens to my child's opinions when planning service projects.	9	33	12	1	99	0	M
68. My child enjoys serving others.	38	107	2	0	7	0	N
69. This school promotes serving others.	48	84	6	0	15	1	O
Color							



Total Responses : 154

Art

Response	Num Responses	Raw %	Adjusted %	
Strongly Agree	0	0.00	0.00	
Agree	7	4.55	5.26	
Disagree	3	1.95	2.26	
Strongly Disagree	2	1.30	1.50	
Does Not Apply or Do Not Know	121	78.57	90.98	
No Response	21	13.64		

Total Responses : 154

Computer

Response	Num Responses	Raw %	Adjusted %	
Strongly Agree	0	0.00	0.00	
Agree	10	6.49	7.58	
Disagree	2	1.30	1.52	
Strongly Disagree	3	1.95	2.27	
Does Not Apply or Do Not Know	117	75.97	88.64	
No Response	22	14.29		

Total Responses : 154

Language Arts / English

Response	Num Responses	Raw %	Adjusted %	
Strongly Agree	3	1.95	2.24	
Agree	17	11.04	12.69	
Disagree	3	1.95	2.24	
Strongly Disagree	1	0.65	0.75	
Does Not Apply or Do Not Know	110	71.43	82.09	
No Response	20	12.99		

Total Responses : 154

Library Skills

Response	Num Responses	Raw %	Adjusted %	
Strongly Agree	0	0.00	0.00	

Agree	10	6.49	7.46	
Disagree	2	1.30	1.49	
Strongly Disagree	1	0.65	0.75	
Does Not Apply or Do Not Know	121	78.57	90.30	
No Response	20	12.99		

Total Responses : 154

Mathematics

Response	Num Responses	Raw %	Adjusted %	
Strongly Agree	1	0.65	0.75	
Agree	6	3.90	4.48	
Disagree	2	1.30	1.49	
Strongly Disagree	2	1.30	1.49	
Does Not Apply or Do Not Know	123	79.87	91.79	
No Response	20	12.99		

Total Responses : 154

Music

Response	Num Responses	Raw %	Adjusted %	
Strongly Agree	2	1.30	1.49	
Agree	8	5.19	5.97	
Disagree	3	1.95	2.24	
Strongly Disagree	1	0.65	0.75	
Does Not Apply or Do Not Know	120	77.92	89.55	
No Response	20	12.99		

Total Responses : 154

Physical Education

Response	Num Responses	Raw %	Adjusted %	
Strongly Agree	0	0.00	0.00	
Agree	9	5.84	6.72	
Disagree	3	1.95	2.24	
Strongly Disagree	1	0.65	0.75	
Does Not Apply or Do Not Know	121	78.57	90.30	
No Response	20	12.99		

Total Responses : 154

Reading / Literature

Response	Num Responses	Raw %	Adjusted %	
Strongly Agree	6	3.90	4.44	
Agree	19	12.34	14.07	
Disagree	3	1.95	2.22	
Strongly Disagree	1	0.65	0.74	
Does Not Apply or Do Not Know	106	68.83	78.52	
No Response	19	12.34		

Total Responses : 154

Religion

Response	Num Responses	Raw %	Adjusted %	
Strongly Agree	25	16.23	17.86	
Agree	31	20.13	22.14	
Disagree	3	1.95	2.14	
Strongly Disagree	1	0.65	0.71	
Does Not Apply or Do Not Know	80	51.95	57.14	
No Response	14	9.09		

Total Responses : 154

Science

Response	Num Responses	Raw %	Adjusted %	
Strongly Agree	1	0.65	0.76	
Agree	18	11.69	13.64	
Disagree	2	1.30	1.52	
Strongly Disagree	1	0.65	0.76	
Does Not Apply or Do Not Know	110	71.43	83.33	
No Response	22	14.29		

Total Responses : 154

Social Studies

Response	Num Responses	Raw %	Adjusted %	
Strongly Agree	4	2.60	3.03	
Agree	18	11.69	13.64	
Disagree	3	1.95	2.27	
Strongly Disagree	1	0.65	0.76	
Does Not Apply or Do Not Know	106	68.83	80.30	
No Response	22	14.29		

Total Responses : 154

66. My child believes serving others is an important part of being Catholic.

Response	Num Responses	Raw %	Adjusted %	
Strongly Agree	41	26.62	26.62	
Agree	100	64.94	64.94	
Disagree	4	2.60	2.60	
Strongly Disagree	1	0.65	0.65	
Does Not Apply or Do Not Know	8	5.19	5.19	
No Response	0	0.00		

Total Responses : 154

67. The staff at our school listens to my child's opinions when planning service projects.

Response	Num Responses	Raw %	Adjusted %	
Strongly Agree	9	5.84	5.84	
Agree	33	21.43	21.43	
Disagree	12	7.79	7.79	
Strongly Disagree	1	0.65	0.65	
Does Not Apply or Do Not Know	99	64.29	64.29	
No Response	0	0.00		

Total Responses : 154

68. My child enjoys serving others.

Response	Num Responses	Raw %	Adjusted %	
Strongly Agree	38	24.68	24.68	
Agree	107	69.48	69.48	
Disagree	2	1.30	1.30	
Strongly Disagree	0	0.00	0.00	
Does Not Apply or Do Not Know	7	4.55	4.55	
No Response	0	0.00		

Total Responses : 154

69. This school promotes serving others.

Response	Num Responses	Raw %	Adjusted %	
Strongly Agree	48	31.17	31.37	
Agree	84	54.55	54.90	
Disagree	6	3.90	3.92	
Strongly Disagree	0	0.00	0.00	

Does Not Apply or Do Not Know	15	9.74	9.80	
No Response	1	0.65		

Total Responses : 154