

Account ID: StAlbert  
Survey ID: 2006Stud

Control    New Survey    Instructions    Questions    Layout    Logoff

## Results

[Back to Survey Info](#)  
[Back to Tabulate](#)

Filters Applied  
NONE - ALL record selected

### I am in grade

Response	Num Responses	Raw %	Adjusted %		20	40	60	80
5	81	20.77	20.93					
6	105	26.92	27.13					
7	102	26.15	26.36					
8	99	25.38	25.58					
No Response	3	0.77						

Total Responses : 390

### 1. I feel welcome at this school.

Response	Num Responses	Raw %	Adjusted %		20	40	60	80
Strongly Agree	102	26.15	26.36					
Agree	257	65.90	66.41					
Disagree	14	3.59	3.62					
Strongly Disagree	11	2.82	2.84					
Does Not Apply or Do Not Know	3	0.77	0.78					
No Response	3	0.77						

Total Responses : 390

### 2. I feel welcome in my classrooms.

Response	Num Responses	Raw %	Adjusted %		20	40	60	80
Strongly Agree	91	23.33	23.76					
Agree	251	64.36	65.54					
Disagree	29	7.44	7.57					
Strongly Disagree	6	1.54	1.57					
Does Not Apply or Do Not Know	6	1.54	1.57					
No Response	7	1.79						

Total Responses : 390

### 3. I feel safe at this school.

Response	Num Responses	Raw %	Adjusted %		20	40	60	80
Strongly Agree	196	50.26	50.78					
Agree	163	41.79	42.23					
Disagree	17	4.36	4.40					
Strongly Disagree	7	1.79	1.81					
Does Not Apply or Do Not Know	3	0.77	0.78					
No Response	4	1.03						

Total Responses : 390

### 4. I am satisfied with the way that administration handles my problems.

Response	Num Responses	Raw %	Adjusted %		20	40	60	80
Strongly Agree	28	7.18	7.37					
Agree	220	56.41	57.89					

Disagree	72	18.46	18.95	
Strongly Disagree	29	7.44	7.63	
Does Not Apply or Do Not Know	31	7.95	8.16	
No Response	10	2.56		

Total Responses : 390

5. I can count on my teachers to listen to my side of the story and be fair.

Response	Num Responses	Raw %	Adjusted %	
Strongly Agree	60	15.38	15.71	
Agree	177	45.38	46.34	
Disagree	88	22.56	23.04	
Strongly Disagree	44	11.28	11.52	
Does Not Apply or Do Not Know	13	3.33	3.40	
No Response	8	2.05		

Total Responses : 390

6. I am treated with respect by my teachers.

Response	Num Responses	Raw %	Adjusted %	
Strongly Agree	101	25.90	26.44	
Agree	202	51.79	52.88	
Disagree	53	13.59	13.87	
Strongly Disagree	17	4.36	4.45	
Does Not Apply or Do Not Know	9	2.31	2.36	
No Response	8	2.05		

Total Responses : 390

7. I am treated with respect by Mr. Brownfield.

Response	Num Responses	Raw %	Adjusted %	
Strongly Agree	129	33.08	33.51	
Agree	186	47.69	48.31	
Disagree	36	9.23	9.35	
Strongly Disagree	27	6.92	7.01	
Does Not Apply or Do Not Know	7	1.79	1.82	
No Response	5	1.28		

Total Responses : 390

8. I am treated with respect by Mr. Carner.

Response	Num Responses	Raw %	Adjusted %	
Strongly Agree	224	57.44	58.03	
Agree	150	38.46	38.86	
Disagree	3	0.77	0.78	
Strongly Disagree	7	1.79	1.81	
Does Not Apply or Do Not Know	2	0.51	0.52	
No Response	4	1.03		

Total Responses : 390

9. I am treated with respect by the people who work in the cafeteria.

Response	Num Responses	Raw %	Adjusted %	
Strongly Agree	114	29.23	29.53	
Agree	207	53.08	53.63	
Disagree	40	10.26	10.36	

Strongly Disagree	20	5.13	5.18	
Does Not Apply or Do Not Know	5	1.28	1.30	
No Response	4	1.03		

Total Responses : 390

10. I am treated with respect by the people who work in the office.

Response	Num Responses	Raw %	Adjusted %	
Strongly Agree	233	59.74	60.36	
Agree	137	35.13	35.49	
Disagree	4	1.03	1.04	
Strongly Disagree	5	1.28	1.30	
Does Not Apply or Do Not Know	7	1.79	1.81	
No Response	4	1.03		

Total Responses : 390

11. I am treated with respect by the school nurses.

Response	Num Responses	Raw %	Adjusted %	
Strongly Agree	148	37.95	38.44	
Agree	181	46.41	47.01	
Disagree	26	6.67	6.75	
Strongly Disagree	11	2.82	2.86	
Does Not Apply or Do Not Know	19	4.87	4.94	
No Response	5	1.28		

Total Responses : 390

12. I am treated with respect by the teachers in the mobile unit.

Response	Num Responses	Raw %	Adjusted %	
Strongly Agree	39	10.00	10.21	
Agree	51	13.08	13.35	
Disagree	2	0.51	0.52	
Strongly Disagree	5	1.28	1.31	
Does Not Apply or Do Not Know	285	73.08	74.61	
No Response	8	2.05		

Total Responses : 390

13. I am treated with respect by the school psychologist (Dr. Joe Rocchio).

Response	Num Responses	Raw %	Adjusted %	
Strongly Agree	36	9.23	9.40	
Agree	34	8.72	8.88	
Disagree	1	0.26	0.26	
Strongly Disagree	4	1.03	1.04	
Does Not Apply or Do Not Know	308	78.97	80.42	
No Response	7	1.79		

Total Responses : 390

14. I am treated with respect by the classroom aides.

Response	Num Responses	Raw %	Adjusted %	
Strongly Agree	147	37.69	38.38	
Agree	144	36.92	37.60	
Disagree	5	1.28	1.31	
Strongly Disagree	9	2.31	2.35	

Does Not Apply or Do Not Know	78	20.00	20.37	
No Response	7	1.79		

Total Responses : 390

15. I am treated with respect by the specialist teachers (Music, Art, Gym, Spanish, Computer, Library, Mrs. Vitale).

Response	Num Responses	Raw %	Adjusted %	
Strongly Agree	111	28.46	28.83	
Agree	218	55.90	56.62	
Disagree	38	9.74	9.87	
Strongly Disagree	18	4.62	4.68	
Does Not Apply or Do Not Know	0	0.00	0.00	
No Response	5	1.28		

Total Responses : 390

16. I am treated with respect by the students at this school.

Response	Num Responses	Raw %	Adjusted %	
Strongly Agree	69	17.69	17.92	
Agree	236	60.51	61.30	
Disagree	52	13.33	13.51	
Strongly Disagree	28	7.18	7.27	
Does Not Apply or Do Not Know	0	0.00	0.00	
No Response	5	1.28		

Total Responses : 390

17. I am happy with the way that students behave in class.

Response	Num Responses	Raw %	Adjusted %	
Strongly Agree	56	14.36	14.66	
Agree	216	55.38	56.54	
Disagree	80	20.51	20.94	
Strongly Disagree	25	6.41	6.54	
Does Not Apply or Do Not Know	5	1.28	1.31	
No Response	8	2.05		

Total Responses : 390

18. I am happy with the way that students behave in school.

Response	Num Responses	Raw %	Adjusted %	
Strongly Agree	53	13.59	13.84	
Agree	230	58.97	60.05	
Disagree	69	17.69	18.02	
Strongly Disagree	20	5.13	5.22	
Does Not Apply or Do Not Know	11	2.82	2.87	
No Response	7	1.79		

Total Responses : 390

19. I am happy with the way that school rules are enforced.

Response	Num Responses	Raw %	Adjusted %	
Strongly Agree	26	6.67	6.82	
Agree	172	44.10	45.14	
Disagree	110	28.21	28.87	
Strongly Disagree	64	16.41	16.80	
Does Not Apply or Do Not Know	9	2.31	2.36	

No Response	9	2.31		
-------------	---	------	--	--

Total Responses : 390

20. I am happy with how well students do what is expected without being told.

Response	Num Responses	Raw %	Adjusted %	
Strongly Agree	33	8.46	8.59	
Agree	226	57.95	58.85	
Disagree	81	20.77	21.09	
Strongly Disagree	24	6.15	6.25	
Does Not Apply or Do Not Know	20	5.13	5.21	
No Response	6	1.54		

Total Responses : 390

21. I like this school.

Response	Num Responses	Raw %	Adjusted %	
Strongly Agree	91	23.33	23.58	
Agree	208	53.33	53.89	
Disagree	43	11.03	11.14	
Strongly Disagree	33	8.46	8.55	
Does Not Apply or Do Not Know	11	2.82	2.85	
No Response	4	1.03		

Total Responses : 390

22. I think that this is a good school.

Response	Num Responses	Raw %	Adjusted %	
Strongly Agree	115	29.49	29.87	
Agree	213	54.62	55.32	
Disagree	25	6.41	6.49	
Strongly Disagree	22	5.64	5.71	
Does Not Apply or Do Not Know	10	2.56	2.60	
No Response	5	1.28		

Total Responses : 390

23. I am happy with the way students treat each other.

Response	Num Responses	Raw %	Adjusted %	
Strongly Agree	31	7.95	8.07	
Agree	209	53.59	54.43	
Disagree	95	24.36	24.74	
Strongly Disagree	37	9.49	9.64	
Does Not Apply or Do Not Know	12	3.08	3.12	
No Response	6	1.54		

Total Responses : 390

24. It's easy to make friends at my school.

Response	Num Responses	Raw %	Adjusted %	
Strongly Agree	106	27.18	27.46	
Agree	210	53.85	54.40	
Disagree	43	11.03	11.14	
Strongly Disagree	19	4.87	4.92	
Does Not Apply or Do Not Know	8	2.05	2.07	
No Response	4	1.03		

Total Responses : 390

25. I am involved in a St. Albert the Great School extra-curricular activity (music, drama, sports, Pow of the Pen, yearbook, Geography Bee, Classroom of Champions, etc.).

Response	Num Responses	Raw %	Adjusted %				
Yes	339	86.92	87.82				
No	47	12.05	12.18				
No Response	4	1.03					

Total Responses : 390

26. I am happy with the number of extra-curricular activities I can participate in.

Response	Num Responses	Raw %	Adjusted %				
Strongly Agree	170	43.59	44.27				
Agree	165	42.31	42.97				
Disagree	25	6.41	6.51				
Strongly Disagree	8	2.05	2.08				
Does Not Apply or Do Not Know	16	4.10	4.17				
No Response	6	1.54					

Total Responses : 390

27. I am happy with the amount that students can plan and take part in school events and activities.

Response	Num Responses	Raw %	Adjusted %				
Strongly Agree	102	26.15	26.56				
Agree	223	57.18	58.07				
Disagree	30	7.69	7.81				
Strongly Disagree	17	4.36	4.43				
Does Not Apply or Do Not Know	12	3.08	3.12				
No Response	6	1.54					

Total Responses : 390

28. My classes challenge me.

Response	Num Responses	Raw %	Adjusted %				
Strongly Agree	86	22.05	22.34				
Agree	242	62.05	62.86				
Disagree	38	9.74	9.87				
Strongly Disagree	16	4.10	4.16				
Does Not Apply or Do Not Know	3	0.77	0.78				
No Response	5	1.28					

Total Responses : 390

29. My classes meet my needs.

Response	Num Responses	Raw %	Adjusted %				
Strongly Agree	62	15.90	16.19				
Agree	266	68.21	69.45				
Disagree	35	8.97	9.14				
Strongly Disagree	8	2.05	2.09				
Does Not Apply or Do Not Know	12	3.08	3.13				
No Response	7	1.79					

Total Responses : 390

30. I have opportunities to choose my own projects.

Response	Num Responses	Raw %	Adjusted %				
Strongly Agree	31	7.95	8.09				
Agree	164	42.05	42.82				

Disagree	115	29.49	30.03	
Strongly Disagree	54	13.85	14.10	
Does Not Apply or Do Not Know	19	4.87	4.96	
No Response	7	1.79		

Total Responses : 390

31. I feel like I am in charge of what I learn.

Response	Num Responses	Raw %	Adjusted %	
Strongly Agree	36	9.23	9.35	
Agree	154	39.49	40.00	
Disagree	120	30.77	31.17	
Strongly Disagree	58	14.87	15.06	
Does Not Apply or Do Not Know	17	4.36	4.42	
No Response	5	1.28		

Total Responses : 390

32. My teachers make an effort to show me another way to learn the material if I don't understand the time.

Response	Num Responses	Raw %	Adjusted %	
Strongly Agree	87	22.31	22.60	
Agree	183	46.92	47.53	
Disagree	78	20.00	20.26	
Strongly Disagree	24	6.15	6.23	
Does Not Apply or Do Not Know	13	3.33	3.38	
No Response	5	1.28		

Total Responses : 390

33. I understand how to apply what I learn at school to real-life situations.

Response	Num Responses	Raw %	Adjusted %	
Strongly Agree	70	17.95	18.28	
Agree	226	57.95	59.01	
Disagree	64	16.41	16.71	
Strongly Disagree	15	3.85	3.92	
Does Not Apply or Do Not Know	8	2.05	2.09	
No Response	7	1.79		

Total Responses : 390

34. I feel successful at this school.

Response	Num Responses	Raw %	Adjusted %	
Strongly Agree	111	28.46	28.98	
Agree	218	55.90	56.92	
Disagree	37	9.49	9.66	
Strongly Disagree	10	2.56	2.61	
Does Not Apply or Do Not Know	7	1.79	1.83	
No Response	7	1.79		

Total Responses : 390

35. This school is preparing me for high school.

Response	Num Responses	Raw %	Adjusted %	
Strongly Agree	117	30.00	30.39	
Agree	197	50.51	51.17	
Disagree	33	8.46	8.57	

Strongly Disagree	18	4.62	4.68	
Does Not Apply or Do Not Know	20	5.13	5.19	
No Response	5	1.28		

Total Responses : 390

36. Homework helps me to learn.

Response	Num Responses	Raw %	Adjusted %	
Strongly Agree	45	11.54	11.72	
Agree	206	52.82	53.65	
Disagree	79	20.26	20.57	
Strongly Disagree	47	12.05	12.24	
Does Not Apply or Do Not Know	7	1.79	1.82	
No Response	6	1.54		

Total Responses : 390

37. There is an appropriate amount of project work.

Response	Num Responses	Raw %	Adjusted %	
Strongly Agree	53	13.59	13.80	
Agree	241	61.79	62.76	
Disagree	60	15.38	15.62	
Strongly Disagree	21	5.38	5.47	
Does Not Apply or Do Not Know	9	2.31	2.34	
No Response	6	1.54		

Total Responses : 390

38. Projects require too much help from my parents.

Response	Num Responses	Raw %	Adjusted %	
Strongly Agree	22	5.64	5.71	
Agree	68	17.44	17.66	
Disagree	206	52.82	53.51	
Strongly Disagree	73	18.72	18.96	
Does Not Apply or Do Not Know	16	4.10	4.16	
No Response	5	1.28		

Total Responses : 390

39. This school encourages me to work to the best of my ability.

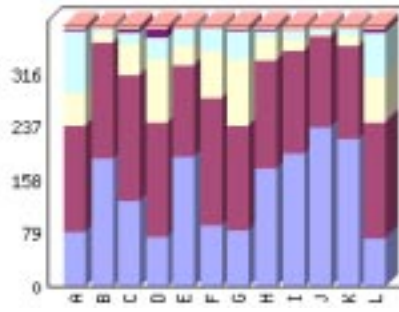
Response	Num Responses	Raw %	Adjusted %	
Strongly Agree	115	29.49	30.34	
Agree	220	56.41	58.05	
Disagree	27	6.92	7.12	
Strongly Disagree	13	3.33	3.43	
Does Not Apply or Do Not Know	4	1.03	1.06	
No Response	11	2.82		

Total Responses : 390

40. I have learned new and useful things in:

Category	Strongly Agree	Disagree	Strongly Disagree	Does Not Apply or Do Not Know	NR	Legend
Art	82	158	50	91	4	5 A

Computer	192	172	16	4	0	6	B
Language Arts / English	129	186	47	18	3	7	C
Library Skills	74	170	95	33	11	7	D
Mathematics	195	136	29	23	1	6	E
Music	92	190	70	31	1	6	F
Physical Education	85	155	99	43	3	5	G
Reading / Literature	176	161	36	9	1	7	H
Religion	199	153	17	12	0	9	I
Science / Health	237	138	2	6	1	6	J
Social Studies	220	140	15	9	0	6	K
Spanish	73	171	70	64	6	6	L
Color							



Total Responses : 390

**Art**

Response	Num Responses	Raw %	Adjusted %	
Strongly Agree	82	21.03	21.30	<div style="width: 21.30%;"></div>
Agree	158	40.51	41.04	<div style="width: 41.04%;"></div>
Disagree	50	12.82	12.99	<div style="width: 12.99%;"></div>
Strongly Disagree	91	23.33	23.64	<div style="width: 23.64%;"></div>
Does Not Apply or Do Not Know	4	1.03	1.04	<div style="width: 1.04%;"></div>
No Response	5	1.28		<div style="width: 1.28%;"></div>

Total Responses : 390

**Computer**

Response	Num Responses	Raw %	Adjusted %	
Strongly Agree	192	49.23	50.00	<div style="width: 50.00%;"></div>
Agree	172	44.10	44.79	<div style="width: 44.79%;"></div>
Disagree	16	4.10	4.17	<div style="width: 4.17%;"></div>
Strongly Disagree	4	1.03	1.04	<div style="width: 1.04%;"></div>
Does Not Apply or Do Not Know	0	0.00	0.00	<div style="width: 0.00%;"></div>
No Response	6	1.54		<div style="width: 1.54%;"></div>

Total Responses : 390

**Language Arts / English**

Response	Num Responses	Raw %	Adjusted %	
Strongly Agree	129	33.08	33.68	<div style="width: 33.68%;"></div>
Agree	186	47.69	48.56	<div style="width: 48.56%;"></div>
Disagree	47	12.05	12.27	<div style="width: 12.27%;"></div>
Strongly Disagree	18	4.62	4.70	<div style="width: 4.70%;"></div>
Does Not Apply or Do Not Know	3	0.77	0.78	<div style="width: 0.78%;"></div>
No Response	7	1.79		<div style="width: 1.79%;"></div>

Total Responses : 390

**Library Skills**

Response	Num Responses	Raw %	Adjusted %	
Strongly Agree	74	18.97	19.32	<div style="width: 19.32%;"></div>

Agree	170	43.59	44.39	
Disagree	95	24.36	24.80	
Strongly Disagree	33	8.46	8.62	
Does Not Apply or Do Not Know	11	2.82	2.87	
No Response	7	1.79		

Total Responses : 390

**Mathematics**

Response	Num Responses	Raw %	Adjusted %	
Strongly Agree	195	50.00	50.78	
Agree	136	34.87	35.42	
Disagree	29	7.44	7.55	
Strongly Disagree	23	5.90	5.99	
Does Not Apply or Do Not Know	1	0.26	0.26	
No Response	6	1.54		

Total Responses : 390

**Music**

Response	Num Responses	Raw %	Adjusted %	
Strongly Agree	92	23.59	23.96	
Agree	190	48.72	49.48	
Disagree	70	17.95	18.23	
Strongly Disagree	31	7.95	8.07	
Does Not Apply or Do Not Know	1	0.26	0.26	
No Response	6	1.54		

Total Responses : 390

**Physical Education**

Response	Num Responses	Raw %	Adjusted %	
Strongly Agree	85	21.79	22.08	
Agree	155	39.74	40.26	
Disagree	99	25.38	25.71	
Strongly Disagree	43	11.03	11.17	
Does Not Apply or Do Not Know	3	0.77	0.78	
No Response	5	1.28		

Total Responses : 390

**Reading / Literature**

Response	Num Responses	Raw %	Adjusted %	
Strongly Agree	176	45.13	45.95	
Agree	161	41.28	42.04	
Disagree	36	9.23	9.40	
Strongly Disagree	9	2.31	2.35	
Does Not Apply or Do Not Know	1	0.26	0.26	
No Response	7	1.79		

Total Responses : 390

**Religion**

Response	Num Responses	Raw %	Adjusted %	
Strongly Agree	199	51.03	52.23	
Agree	153	39.23	40.16	

Disagree	17	4.36	4.46	
Strongly Disagree	12	3.08	3.15	
Does Not Apply or Do Not Know	0	0.00	0.00	
No Response	9	2.31		

Total Responses : 390

Science / Health

Response	Num Responses	Raw %	Adjusted %	
Strongly Agree	237	60.77	61.72	
Agree	138	35.38	35.94	
Disagree	2	0.51	0.52	
Strongly Disagree	6	1.54	1.56	
Does Not Apply or Do Not Know	1	0.26	0.26	
No Response	6	1.54		

Total Responses : 390

Social Studies

Response	Num Responses	Raw %	Adjusted %	
Strongly Agree	220	56.41	57.29	
Agree	140	35.90	36.46	
Disagree	15	3.85	3.91	
Strongly Disagree	9	2.31	2.34	
Does Not Apply or Do Not Know	0	0.00	0.00	
No Response	6	1.54		

Total Responses : 390

Spanish

Response	Num Responses	Raw %	Adjusted %	
Strongly Agree	73	18.72	19.01	
Agree	171	43.85	44.53	
Disagree	70	17.95	18.23	
Strongly Disagree	64	16.41	16.67	
Does Not Apply or Do Not Know	6	1.54	1.56	
No Response	6	1.54		

Total Responses : 390

41. It is easy for me to use the school library.

Response	Num Responses	Raw %	Adjusted %	
Strongly Agree	156	40.00	40.84	
Agree	193	49.49	50.52	
Disagree	21	5.38	5.50	
Strongly Disagree	10	2.56	2.62	
Does Not Apply or Do Not Know	2	0.51	0.52	
No Response	8	2.05		

Total Responses : 390

42. It is easy for me to use the school computer lab.

Response	Num Responses	Raw %	Adjusted %	
Strongly Agree	167	42.82	43.60	
Agree	193	49.49	50.39	
Disagree	15	3.85	3.92	

Strongly Disagree	6	1.54	1.57	
Does Not Apply or Do Not Know	2	0.51	0.52	
No Response	7	1.79		

Total Responses : 390

43. I am happy with the selection of books and other materials in the school library.

Response	Num Responses	Raw %	Adjusted %	
Strongly Agree	79	20.26	20.52	
Agree	189	48.46	49.09	
Disagree	81	20.77	21.04	
Strongly Disagree	33	8.46	8.57	
Does Not Apply or Do Not Know	3	0.77	0.78	
No Response	5	1.28		

Total Responses : 390

44. The school grounds are kept clean.

Response	Num Responses	Raw %	Adjusted %	
Strongly Agree	107	27.44	27.79	
Agree	213	54.62	55.32	
Disagree	42	10.77	10.91	
Strongly Disagree	18	4.62	4.68	
Does Not Apply or Do Not Know	5	1.28	1.30	
No Response	5	1.28		

Total Responses : 390

45. The school buildings are kept clean and in good repair.

Response	Num Responses	Raw %	Adjusted %	
Strongly Agree	131	33.59	34.03	
Agree	220	56.41	57.14	
Disagree	23	5.90	5.97	
Strongly Disagree	8	2.05	2.08	
Does Not Apply or Do Not Know	3	0.77	0.78	
No Response	5	1.28		

Total Responses : 390

46. The classroom supplies and materials help me learn.

Response	Num Responses	Raw %	Adjusted %	
Strongly Agree	60	15.38	15.71	
Agree	246	63.08	64.40	
Disagree	51	13.08	13.35	
Strongly Disagree	8	2.05	2.09	
Does Not Apply or Do Not Know	17	4.36	4.45	
No Response	8	2.05		

Total Responses : 390

47. In general, I am happy about the school buildings, supplies, and upkeep at my school.

Response	Num Responses	Raw %	Adjusted %	
Strongly Agree	99	25.38	25.78	
Agree	246	63.08	64.06	
Disagree	16	4.10	4.17	
Strongly Disagree	13	3.33	3.39	

Does Not Apply or Do Not Know	10	2.56	2.60	
No Response	6	1.54		

Total Responses : 390

48. Students of this school obtain a good understanding of their Catholic faith.

Response	Num Responses	Raw %	Adjusted %	
Strongly Agree	137	35.13	35.58	
Agree	207	53.08	53.77	
Disagree	31	7.95	8.05	
Strongly Disagree	8	2.05	2.08	
Does Not Apply or Do Not Know	2	0.51	0.52	
No Response	5	1.28		

Total Responses : 390

49. Being a Catholic school is important to everyone at this school: students, parents, faculty and administration.

Response	Num Responses	Raw %	Adjusted %	
Strongly Agree	158	40.51	41.15	
Agree	168	43.08	43.75	
Disagree	41	10.51	10.68	
Strongly Disagree	10	2.56	2.60	
Does Not Apply or Do Not Know	7	1.79	1.82	
No Response	6	1.54		

Total Responses : 390

50. Our school is preparing students to be good Catholics.

Response	Num Responses	Raw %	Adjusted %	
Strongly Agree	139	35.64	36.39	
Agree	212	54.36	55.50	
Disagree	19	4.87	4.97	
Strongly Disagree	9	2.31	2.36	
Does Not Apply or Do Not Know	3	0.77	0.79	
No Response	8	2.05		

Total Responses : 390

51. The school liturgies are helpful and meaningful for the students.

Response	Num Responses	Raw %	Adjusted %	
Strongly Agree	89	22.82	23.24	
Agree	235	60.26	61.36	
Disagree	38	9.74	9.92	
Strongly Disagree	13	3.33	3.39	
Does Not Apply or Do Not Know	8	2.05	2.09	
No Response	7	1.79		

Total Responses : 390

52. At this school, students have the opportunity to talk to adults about their beliefs and values.

Response	Num Responses	Raw %	Adjusted %	
Strongly Agree	58	14.87	15.14	
Agree	182	46.67	47.52	
Disagree	96	24.62	25.07	
Strongly Disagree	32	8.21	8.36	
Does Not Apply or Do Not Know	15	3.85	3.92	

No Response	7	1.79		
-------------	---	------	--	--

Total Responses : 390

53. Religion class is seen as important by the students of this school.

Response	Num Responses	Raw %	Adjusted %	
Strongly Agree	67	17.18	17.45	
Agree	203	52.05	52.86	
Disagree	76	19.49	19.79	
Strongly Disagree	24	6.15	6.25	
Does Not Apply or Do Not Know	14	3.59	3.65	
No Response	6	1.54		

Total Responses : 390

54. Religion class is seen as important by the parents of this school.

Response	Num Responses	Raw %	Adjusted %	
Strongly Agree	116	29.74	30.37	
Agree	216	55.38	56.54	
Disagree	25	6.41	6.54	
Strongly Disagree	5	1.28	1.31	
Does Not Apply or Do Not Know	20	5.13	5.24	
No Response	8	2.05		

Total Responses : 390

55. Religion class is seen as important by the faculty of this school.

Response	Num Responses	Raw %	Adjusted %	
Strongly Agree	125	32.05	32.81	
Agree	206	52.82	54.07	
Disagree	27	6.92	7.09	
Strongly Disagree	7	1.79	1.84	
Does Not Apply or Do Not Know	16	4.10	4.20	
No Response	9	2.31		

Total Responses : 390

56. I believe that the school follows its' mission.

Response	Num Responses	Raw %	Adjusted %	
Strongly Agree	62	15.90	16.19	
Agree	238	61.03	62.14	
Disagree	54	13.85	14.10	
Strongly Disagree	17	4.36	4.44	
Does Not Apply or Do Not Know	12	3.08	3.13	
No Response	7	1.79		

Total Responses : 390

57. I am pleased with the overall direction of the school.

Response	Num Responses	Raw %	Adjusted %	
Strongly Agree	53	13.59	13.77	
Agree	245	62.82	63.64	
Disagree	51	13.08	13.25	
Strongly Disagree	19	4.87	4.94	
Does Not Apply or Do Not Know	17	4.36	4.42	
No Response	5	1.28		

Total Responses : 390

58. I am aware that the school is currently creating a school improvement plan.

Response	Num Responses	Raw %	Adjusted %	
Strongly Agree	57	14.62	14.81	
Agree	169	43.33	43.90	
Disagree	92	23.59	23.90	
Strongly Disagree	37	9.49	9.61	
Does Not Apply or Do Not Know	30	7.69	7.79	
No Response	5	1.28		

Total Responses : 390

59. I evaluate my own written work according to a teacher provided rubric.

Response	Num Responses	Raw %	Adjusted %	
Strongly Agree	64	16.41	16.67	
Agree	232	59.49	60.42	
Disagree	39	10.00	10.16	
Strongly Disagree	13	3.33	3.39	
Does Not Apply or Do Not Know	36	9.23	9.38	
No Response	6	1.54		

Total Responses : 390

60. I know how to edit written work.

Response	Num Responses	Raw %	Adjusted %	
Strongly Agree	96	24.62	25.00	
Agree	240	61.54	62.50	
Disagree	24	6.15	6.25	
Strongly Disagree	10	2.56	2.60	
Does Not Apply or Do Not Know	14	3.59	3.65	
No Response	6	1.54		

Total Responses : 390

61. I edit other classmate's written work.

Response	Num Responses	Raw %	Adjusted %	
Strongly Agree	50	12.82	13.05	
Agree	204	52.31	53.26	
Disagree	83	21.28	21.67	
Strongly Disagree	21	5.38	5.48	
Does Not Apply or Do Not Know	25	6.41	6.53	
No Response	7	1.79		

Total Responses : 390

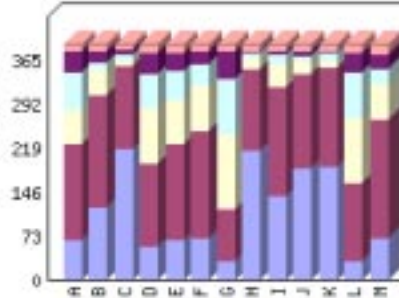
62. I select work to be placed in my writing portfolio.

Response	Num Responses	Raw %	Adjusted %	
Strongly Agree	30	7.69	7.83	
Agree	116	29.74	30.29	
Disagree	129	33.08	33.68	
Strongly Disagree	68	17.44	17.75	
Does Not Apply or Do Not Know	40	10.26	10.44	
No Response	7	1.79		

Total Responses : 390

63. This school year, I have used the writing process and completed a final written product in:

Category	Strongly Agree	Agree	Disagree	Strongly Disagree	Does Not Apply or Do Not Know	NR	Legend
Art	66	160	57	63	34	10	A
Computer	121	185	45	11	18	10	B
Language Arts / English	219	137	9	10	7	8	C
Library Skills	56	136	92	59	34	13	D
Mathematics	66	160	73	48	31	12	E
Music	70	178	74	36	21	11	F
Physical Education	32	86	124	92	45	11	G
Reading / Literature	216	134	18	8	5	9	H
Religion	139	182	38	15	7	9	I
Science	186	157	22	7	7	11	J
Social Studies	187	167	11	11	4	10	K
Spanish	32	130	107	77	30	14	L
64. I know and understand what Catholic social justice teachings are.	68	198	59	25	24	16	M
Color							



Total Responses : 390

**Art**

Response	Num Responses	Raw %	Adjusted %	20	40	60	80
Strongly Agree	66	16.92	17.37				
Agree	160	41.03	42.11				
Disagree	57	14.62	15.00				
Strongly Disagree	63	16.15	16.58				
Does Not Apply or Do Not Know	34	8.72	8.95				
No Response	10	2.56					

Total Responses : 390

**Computer**

Response	Num Responses	Raw %	Adjusted %	20	40	60	80
Strongly Agree	121	31.03	31.84				
Agree	185	47.44	48.68				
Disagree	45	11.54	11.84				
Strongly Disagree	11	2.82	2.89				
Does Not Apply or Do Not Know	18	4.62	4.74				
No Response	10	2.56					

Total Responses : 390

**Language Arts / English**

Response	Num Responses	Raw %	Adjusted %	
Strongly Agree	219	56.15	57.33	
Agree	137	35.13	35.86	
Disagree	9	2.31	2.36	
Strongly Disagree	10	2.56	2.62	
Does Not Apply or Do Not Know	7	1.79	1.83	
No Response	8	2.05		

Total Responses : 390

**Library Skills**

Response	Num Responses	Raw %	Adjusted %	
Strongly Agree	56	14.36	14.85	
Agree	136	34.87	36.07	
Disagree	92	23.59	24.40	
Strongly Disagree	59	15.13	15.65	
Does Not Apply or Do Not Know	34	8.72	9.02	
No Response	13	3.33		

Total Responses : 390

**Mathematics**

Response	Num Responses	Raw %	Adjusted %	
Strongly Agree	66	16.92	17.46	
Agree	160	41.03	42.33	
Disagree	73	18.72	19.31	
Strongly Disagree	48	12.31	12.70	
Does Not Apply or Do Not Know	31	7.95	8.20	
No Response	12	3.08		

Total Responses : 390

**Music**

Response	Num Responses	Raw %	Adjusted %	
Strongly Agree	70	17.95	18.47	
Agree	178	45.64	46.97	
Disagree	74	18.97	19.53	
Strongly Disagree	36	9.23	9.50	
Does Not Apply or Do Not Know	21	5.38	5.54	
No Response	11	2.82		

Total Responses : 390

**Physical Education**

Response	Num Responses	Raw %	Adjusted %	
Strongly Agree	32	8.21	8.44	
Agree	86	22.05	22.69	
Disagree	124	31.79	32.72	
Strongly Disagree	92	23.59	24.27	
Does Not Apply or Do Not Know	45	11.54	11.87	
No Response	11	2.82		

Total Responses : 390

**Reading / Literature**

Response	Num Responses	Raw %	Adjusted %	
Strongly Agree	216	55.38	56.69	

Agree	134	34.36	35.17	
Disagree	18	4.62	4.72	
Strongly Disagree	8	2.05	2.10	
Does Not Apply or Do Not Know	5	1.28	1.31	
No Response	9	2.31		

Total Responses : 390

Religion

Response	Num Responses	Raw %	Adjusted %	
Strongly Agree	139	35.64	36.48	
Agree	182	46.67	47.77	
Disagree	38	9.74	9.97	
Strongly Disagree	15	3.85	3.94	
Does Not Apply or Do Not Know	7	1.79	1.84	
No Response	9	2.31		

Total Responses : 390

Science

Response	Num Responses	Raw %	Adjusted %	
Strongly Agree	186	47.69	49.08	
Agree	157	40.26	41.42	
Disagree	22	5.64	5.80	
Strongly Disagree	7	1.79	1.85	
Does Not Apply or Do Not Know	7	1.79	1.85	
No Response	11	2.82		

Total Responses : 390

Social Studies

Response	Num Responses	Raw %	Adjusted %	
Strongly Agree	187	47.95	49.21	
Agree	167	42.82	43.95	
Disagree	11	2.82	2.89	
Strongly Disagree	11	2.82	2.89	
Does Not Apply or Do Not Know	4	1.03	1.05	
No Response	10	2.56		

Total Responses : 390

Spanish

Response	Num Responses	Raw %	Adjusted %	
Strongly Agree	32	8.21	8.51	
Agree	130	33.33	34.57	
Disagree	107	27.44	28.46	
Strongly Disagree	77	19.74	20.48	
Does Not Apply or Do Not Know	30	7.69	7.98	
No Response	14	3.59		

Total Responses : 390

64. I know and understand what Catholic social justice teachings are.

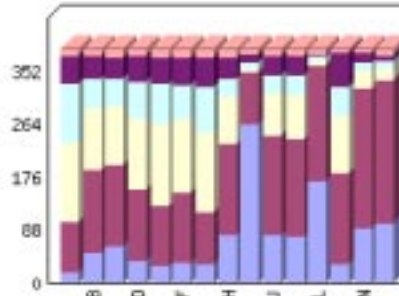
Response	Num Responses	Raw %	Adjusted %	
Strongly Agree	68	17.44	18.18	
Agree	198	50.77	52.94	

Disagree	59	15.13	15.78	
Strongly Disagree	25	6.41	6.68	
Does Not Apply or Do Not Know	24	6.15	6.42	
No Response	16	4.10		

Total Responses : 390

65. We discuss Catholic social justice principles in:

Category	Strongly Agree	Agree	Disagree	Strongly Disagree	Does Not Apply or Do Not Know	NR	Legend
Art	18	83	133	99	45	12	A
Computer	50	140	103	48	37	12	B
Language Arts / English	61	137	96	46	37	13	C
Library Skills	36	121	118	60	43	12	D
Mathematics	29	99	136	69	44	13	E
Music	33	117	123	58	45	14	F
Physical Education	32	86	132	77	49	14	G
Reading / Literature	79	154	78	31	35	13	H
Religion	266	85	7	9	14	9	I
Science	81	165	71	29	32	12	J
Social Studies	77	164	74	32	31	12	K
66. I believe serving others is an important part of being Catholic.	171	191	9	7	4	8	L
67. The staff at our school listens to my opinion when planning service projects.	30	152	97	47	57	7	M
68. I enjoy serving others.	92	233	30	12	16	7	N
69. This school promotes serving others.	100	239	22	11	6	12	O
Color							



Total Responses : 390

Art

Response	Num Responses	Raw %	Adjusted %
Strongly Agree	18	4.62	4.76

Agree	83	21.28	21.96	
Disagree	133	34.10	35.19	
Strongly Disagree	99	25.38	26.19	
Does Not Apply or Do Not Know	45	11.54	11.90	
No Response	12	3.08		

Total Responses : 390

**Computer**

Response	Num Responses	Raw %	Adjusted %	
Strongly Agree	50	12.82	13.23	
Agree	140	35.90	37.04	
Disagree	103	26.41	27.25	
Strongly Disagree	48	12.31	12.70	
Does Not Apply or Do Not Know	37	9.49	9.79	
No Response	12	3.08		

Total Responses : 390

**Language Arts / English**

Response	Num Responses	Raw %	Adjusted %	
Strongly Agree	61	15.64	16.18	
Agree	137	35.13	36.34	
Disagree	96	24.62	25.46	
Strongly Disagree	46	11.79	12.20	
Does Not Apply or Do Not Know	37	9.49	9.81	
No Response	13	3.33		

Total Responses : 390

**Library Skills**

Response	Num Responses	Raw %	Adjusted %	
Strongly Agree	36	9.23	9.52	
Agree	121	31.03	32.01	
Disagree	118	30.26	31.22	
Strongly Disagree	60	15.38	15.87	
Does Not Apply or Do Not Know	43	11.03	11.38	
No Response	12	3.08		

Total Responses : 390

**Mathematics**

Response	Num Responses	Raw %	Adjusted %	
Strongly Agree	29	7.44	7.69	
Agree	99	25.38	26.26	
Disagree	136	34.87	36.07	
Strongly Disagree	69	17.69	18.30	
Does Not Apply or Do Not Know	44	11.28	11.67	
No Response	13	3.33		

Total Responses : 390

**Music**

Response	Num Responses	Raw %	Adjusted %	
Strongly Agree	33	8.46	8.78	
Agree	117	30.00	31.12	

Disagree	123	31.54	32.71	
Strongly Disagree	58	14.87	15.43	
Does Not Apply or Do Not Know	45	11.54	11.97	
No Response	14	3.59		

Total Responses : 390

**Physical Education**

Response	Num Responses	Raw %	Adjusted %	
Strongly Agree	32	8.21	8.51	
Agree	86	22.05	22.87	
Disagree	132	33.85	35.11	
Strongly Disagree	77	19.74	20.48	
Does Not Apply or Do Not Know	49	12.56	13.03	
No Response	14	3.59		

Total Responses : 390

**Reading / Literature**

Response	Num Responses	Raw %	Adjusted %	
Strongly Agree	79	20.26	20.95	
Agree	154	39.49	40.85	
Disagree	78	20.00	20.69	
Strongly Disagree	31	7.95	8.22	
Does Not Apply or Do Not Know	35	8.97	9.28	
No Response	13	3.33		

Total Responses : 390

**Religion**

Response	Num Responses	Raw %	Adjusted %	
Strongly Agree	266	68.21	69.82	
Agree	85	21.79	22.31	
Disagree	7	1.79	1.84	
Strongly Disagree	9	2.31	2.36	
Does Not Apply or Do Not Know	14	3.59	3.67	
No Response	9	2.31		

Total Responses : 390

**Science**

Response	Num Responses	Raw %	Adjusted %	
Strongly Agree	81	20.77	21.43	
Agree	165	42.31	43.65	
Disagree	71	18.21	18.78	
Strongly Disagree	29	7.44	7.67	
Does Not Apply or Do Not Know	32	8.21	8.47	
No Response	12	3.08		

Total Responses : 390

**Social Studies**

Response	Num Responses	Raw %	Adjusted %	
Strongly Agree	77	19.74	20.37	
Agree	164	42.05	43.39	
Disagree	74	18.97	19.58	

Strongly Disagree	32	8.21	8.47	
Does Not Apply or Do Not Know	31	7.95	8.20	
No Response	12	3.08		

Total Responses : 390

66. I believe serving others is an important part of being Catholic.

Response	Num Responses	Raw %	Adjusted %	
Strongly Agree	171	43.85	44.76	
Agree	191	48.97	50.00	
Disagree	9	2.31	2.36	
Strongly Disagree	7	1.79	1.83	
Does Not Apply or Do Not Know	4	1.03	1.05	
No Response	8	2.05		

Total Responses : 390

67. The staff at our school listens to my opinion when planning service projects.

Response	Num Responses	Raw %	Adjusted %	
Strongly Agree	30	7.69	7.83	
Agree	152	38.97	39.69	
Disagree	97	24.87	25.33	
Strongly Disagree	47	12.05	12.27	
Does Not Apply or Do Not Know	57	14.62	14.88	
No Response	7	1.79		

Total Responses : 390

68. I enjoy serving others.

Response	Num Responses	Raw %	Adjusted %	
Strongly Agree	92	23.59	24.02	
Agree	233	59.74	60.84	
Disagree	30	7.69	7.83	
Strongly Disagree	12	3.08	3.13	
Does Not Apply or Do Not Know	16	4.10	4.18	
No Response	7	1.79		

Total Responses : 390

69. This school promotes serving others.

Response	Num Responses	Raw %	Adjusted %	
Strongly Agree	100	25.64	26.46	
Agree	239	61.28	63.23	
Disagree	22	5.64	5.82	
Strongly Disagree	11	2.82	2.91	
Does Not Apply or Do Not Know	6	1.54	1.59	
No Response	12	3.08		

Total Responses : 390