



Results

[Back to Survey Info](#)
[Back to Tabulate](#)

Filters Applied
NONE - ALL record selected

I am in grade

| Response | Num Responses | Raw % | Adjusted % | 20 | 40 | 60 | 80 |
|-------------|---------------|-------|------------|----|----|----|----|
| 5 | 101 | 24.28 | 24.46 | | | | |
| 6 | 92 | 22.12 | 22.28 | | | | |
| 7 | 112 | 26.92 | 27.12 | | | | |
| 8 | 108 | 25.96 | 26.15 | | | | |
| No Response | 3 | 0.72 | | | | | |

Total Responses : 416

1. I feel welcome at this school.

| Response | Num Responses | Raw % | Adjusted % | 20 | 40 | 60 | 80 |
|-------------------------------|---------------|-------|------------|----|----|----|----|
| Strongly Agree | 112 | 26.92 | 28.14 | | | | |
| Agree | 263 | 63.22 | 66.08 | | | | |
| Disagree | 12 | 2.88 | 3.02 | | | | |
| Strongly Disagree | 5 | 1.20 | 1.26 | | | | |
| Does Not Apply or Do Not Know | 6 | 1.44 | 1.51 | | | | |
| No Response | 18 | 4.33 | | | | | |

Total Responses : 416

2. I feel welcome in my classrooms.

| Response | Num Responses | Raw % | Adjusted % | 20 | 40 | 60 | 80 |
|-------------------------------|---------------|-------|------------|----|----|----|----|
| Strongly Agree | 102 | 24.52 | 26.29 | | | | |
| Agree | 258 | 62.02 | 66.49 | | | | |
| Disagree | 25 | 6.01 | 6.44 | | | | |
| Strongly Disagree | 1 | 0.24 | 0.26 | | | | |
| Does Not Apply or Do Not Know | 2 | 0.48 | 0.52 | | | | |
| No Response | 28 | 6.73 | | | | | |

Total Responses : 416

3. I feel safe at this school.

| Response | Num Responses | Raw % | Adjusted % | 20 | 40 | 60 | 80 |
|-------------------------------|---------------|-------|------------|----|----|----|----|
| Strongly Agree | 192 | 46.15 | 49.23 | | | | |
| Agree | 181 | 43.51 | 46.41 | | | | |
| Disagree | 9 | 2.16 | 2.31 | | | | |
| Strongly Disagree | 3 | 0.72 | 0.77 | | | | |
| Does Not Apply or Do Not Know | 5 | 1.20 | 1.28 | | | | |
| No Response | 26 | 6.25 | | | | | |

Total Responses : 416

4. I am satisfied with the way that administration handles my problems.

| Response | Num Responses | Raw % | Adjusted % | 20 | 40 | 60 | 80 |
|----------------|---------------|-------|------------|----|----|----|----|
| Strongly Agree | 51 | 12.26 | 13.11 | | | | |
| Agree | 216 | 51.92 | 55.53 | | | | |

| | | | | |
|-------------------------------|----|-------|-------|--|
| Disagree | 75 | 18.03 | 19.28 | |
| Strongly Disagree | 14 | 3.37 | 3.60 | |
| Does Not Apply or Do Not Know | 33 | 7.93 | 8.48 | |
| No Response | 27 | 6.49 | | |

Total Responses : 416

5. I can count on my teachers to listen to my side of the story and be fair.

| Response | Num Responses | Raw % | Adjusted % | |
|-------------------------------|---------------|-------|------------|--|
| Strongly Agree | 66 | 15.87 | 17.23 | |
| Agree | 188 | 45.19 | 49.09 | |
| Disagree | 83 | 19.95 | 21.67 | |
| Strongly Disagree | 31 | 7.45 | 8.09 | |
| Does Not Apply or Do Not Know | 15 | 3.61 | 3.92 | |
| No Response | 33 | 7.93 | | |

Total Responses : 416

6. I am treated with respect by my teachers.

| Response | Num Responses | Raw % | Adjusted % | |
|-------------------------------|---------------|-------|------------|--|
| Strongly Agree | 121 | 29.09 | 31.43 | |
| Agree | 214 | 51.44 | 55.58 | |
| Disagree | 40 | 9.62 | 10.39 | |
| Strongly Disagree | 7 | 1.68 | 1.82 | |
| Does Not Apply or Do Not Know | 3 | 0.72 | 0.78 | |
| No Response | 31 | 7.45 | | |

Total Responses : 416

7. I am treated with respect by Mr. Brownfield.

| Response | Num Responses | Raw % | Adjusted % | |
|-------------------------------|---------------|-------|------------|--|
| Strongly Agree | 167 | 40.14 | 43.26 | |
| Agree | 186 | 44.71 | 48.19 | |
| Disagree | 15 | 3.61 | 3.89 | |
| Strongly Disagree | 9 | 2.16 | 2.33 | |
| Does Not Apply or Do Not Know | 9 | 2.16 | 2.33 | |
| No Response | 30 | 7.21 | | |

Total Responses : 416

8. I am treated with respect by Mr. Carner.

| Response | Num Responses | Raw % | Adjusted % | |
|-------------------------------|---------------|-------|------------|--|
| Strongly Agree | 242 | 58.17 | 62.69 | |
| Agree | 132 | 31.73 | 34.20 | |
| Disagree | 7 | 1.68 | 1.81 | |
| Strongly Disagree | 2 | 0.48 | 0.52 | |
| Does Not Apply or Do Not Know | 3 | 0.72 | 0.78 | |
| No Response | 30 | 7.21 | | |

Total Responses : 416

9. I am treated with respect by the people who work in the cafeteria.

| Response | Num Responses | Raw % | Adjusted % | |
|----------------|---------------|-------|------------|--|
| Strongly Agree | 126 | 30.29 | 32.64 | |
| Agree | 187 | 44.95 | 48.45 | |
| Disagree | 53 | 12.74 | 13.73 | |

| | | | | |
|-------------------------------|----|------|------|--|
| Strongly Disagree | 12 | 2.88 | 3.11 | |
| Does Not Apply or Do Not Know | 8 | 1.92 | 2.07 | |
| No Response | 30 | 7.21 | | |

Total Responses : 416

10. I am treated with respect by the people who work in the office.

| Response | Num Responses | Raw % | Adjusted % | |
|-------------------------------|---------------|-------|------------|--|
| Strongly Agree | 241 | 57.93 | 63.09 | |
| Agree | 127 | 30.53 | 33.25 | |
| Disagree | 4 | 0.96 | 1.05 | |
| Strongly Disagree | 1 | 0.24 | 0.26 | |
| Does Not Apply or Do Not Know | 9 | 2.16 | 2.36 | |
| No Response | 34 | 8.17 | | |

Total Responses : 416

11. I am treated with respect by the school nurses.

| Response | Num Responses | Raw % | Adjusted % | |
|-------------------------------|---------------|-------|------------|--|
| Strongly Agree | 141 | 33.89 | 36.91 | |
| Agree | 172 | 41.35 | 45.03 | |
| Disagree | 45 | 10.82 | 11.78 | |
| Strongly Disagree | 10 | 2.40 | 2.62 | |
| Does Not Apply or Do Not Know | 14 | 3.37 | 3.66 | |
| No Response | 34 | 8.17 | | |

Total Responses : 416

12. I am treated with respect by the teachers in the mobile unit.

| Response | Num Responses | Raw % | Adjusted % | |
|-------------------------------|---------------|-------|------------|--|
| Strongly Agree | 35 | 8.41 | 9.11 | |
| Agree | 38 | 9.13 | 9.90 | |
| Disagree | 5 | 1.20 | 1.30 | |
| Strongly Disagree | 1 | 0.24 | 0.26 | |
| Does Not Apply or Do Not Know | 305 | 73.32 | 79.43 | |
| No Response | 32 | 7.69 | | |

Total Responses : 416

13. I am treated with respect by the school psychologist (Dr. Joe Rocchio).

| Response | Num Responses | Raw % | Adjusted % | |
|-------------------------------|---------------|-------|------------|--|
| Strongly Agree | 43 | 10.34 | 11.26 | |
| Agree | 25 | 6.01 | 6.54 | |
| Disagree | 0 | 0.00 | 0.00 | |
| Strongly Disagree | 3 | 0.72 | 0.79 | |
| Does Not Apply or Do Not Know | 311 | 74.76 | 81.41 | |
| No Response | 34 | 8.17 | | |

Total Responses : 416

14. I am treated with respect by the classroom aides.

| Response | Num Responses | Raw % | Adjusted % | |
|-------------------|---------------|-------|------------|--|
| Strongly Agree | 157 | 37.74 | 40.99 | |
| Agree | 125 | 30.05 | 32.64 | |
| Disagree | 4 | 0.96 | 1.04 | |
| Strongly Disagree | 0 | 0.00 | 0.00 | |

| | | | | | |
|-------------------------------|----|-------|-------|--|--|
| Does Not Apply or Do Not Know | 97 | 23.32 | 25.33 | | |
| No Response | 33 | 7.93 | | | |

Total Responses : 416

15. I am treated with respect by the specialist teachers (Music, Art, Gym, Spanish, Computer, Library, Mrs. Vitale).

| Response | Num Responses | Raw % | Adjusted % | 20 | 40 | 60 | 80 |
|-------------------------------|---------------|-------|------------|----|----|----|----|
| Strongly Agree | 91 | 21.88 | 23.70 | | | | |
| Agree | 232 | 55.77 | 60.42 | | | | |
| Disagree | 38 | 9.13 | 9.90 | | | | |
| Strongly Disagree | 17 | 4.09 | 4.43 | | | | |
| Does Not Apply or Do Not Know | 6 | 1.44 | 1.56 | | | | |
| No Response | 32 | 7.69 | | | | | |

Total Responses : 416

16. I am treated with respect by the students at this school.

| Response | Num Responses | Raw % | Adjusted % | 20 | 40 | 60 | 80 |
|-------------------------------|---------------|-------|------------|----|----|----|----|
| Strongly Agree | 60 | 14.42 | 15.58 | | | | |
| Agree | 234 | 56.25 | 60.78 | | | | |
| Disagree | 66 | 15.87 | 17.14 | | | | |
| Strongly Disagree | 19 | 4.57 | 4.94 | | | | |
| Does Not Apply or Do Not Know | 6 | 1.44 | 1.56 | | | | |
| No Response | 31 | 7.45 | | | | | |

Total Responses : 416

17. I am happy with the way that students behave in class.

| Response | Num Responses | Raw % | Adjusted % | 20 | 40 | 60 | 80 |
|-------------------------------|---------------|-------|------------|----|----|----|----|
| Strongly Agree | 61 | 14.66 | 16.14 | | | | |
| Agree | 206 | 49.52 | 54.50 | | | | |
| Disagree | 76 | 18.27 | 20.11 | | | | |
| Strongly Disagree | 29 | 6.97 | 7.67 | | | | |
| Does Not Apply or Do Not Know | 6 | 1.44 | 1.59 | | | | |
| No Response | 38 | 9.13 | | | | | |

Total Responses : 416

18. I am happy with the way that students behave in school.

| Response | Num Responses | Raw % | Adjusted % | 20 | 40 | 60 | 80 |
|-------------------------------|---------------|-------|------------|----|----|----|----|
| Strongly Agree | 47 | 11.30 | 12.34 | | | | |
| Agree | 222 | 53.37 | 58.27 | | | | |
| Disagree | 81 | 19.47 | 21.26 | | | | |
| Strongly Disagree | 24 | 5.77 | 6.30 | | | | |
| Does Not Apply or Do Not Know | 7 | 1.68 | 1.84 | | | | |
| No Response | 35 | 8.41 | | | | | |

Total Responses : 416

19. I am happy with the way that school rules are enforced.

| Response | Num Responses | Raw % | Adjusted % | 20 | 40 | 60 | 80 |
|-------------------------------|---------------|-------|------------|----|----|----|----|
| Strongly Agree | 45 | 10.82 | 11.94 | | | | |
| Agree | 171 | 41.11 | 45.36 | | | | |
| Disagree | 103 | 24.76 | 27.32 | | | | |
| Strongly Disagree | 55 | 13.22 | 14.59 | | | | |
| Does Not Apply or Do Not Know | 3 | 0.72 | 0.80 | | | | |

| | | | | |
|-------------|----|------|--|--|
| No Response | 39 | 9.38 | | |
|-------------|----|------|--|--|

Total Responses : 416

20. I am happy with how well students do what is expected without being told.

| Response | Num Responses | Raw % | Adjusted % | | 20 | 40 | 60 | 80 |
|-------------------------------|---------------|-------|------------|--|----|----|----|----|
| Strongly Agree | 46 | 11.06 | 11.98 | | | | | |
| Agree | 209 | 50.24 | 54.43 | | | | | |
| Disagree | 83 | 19.95 | 21.61 | | | | | |
| Strongly Disagree | 32 | 7.69 | 8.33 | | | | | |
| Does Not Apply or Do Not Know | 14 | 3.37 | 3.65 | | | | | |
| No Response | 32 | 7.69 | | | | | | |

Total Responses : 416

21. I like this school.

| Response | Num Responses | Raw % | Adjusted % | | 20 | 40 | 60 | 80 |
|-------------------------------|---------------|-------|------------|--|----|----|----|----|
| Strongly Agree | 113 | 27.16 | 29.58 | | | | | |
| Agree | 205 | 49.28 | 53.66 | | | | | |
| Disagree | 34 | 8.17 | 8.90 | | | | | |
| Strongly Disagree | 22 | 5.29 | 5.76 | | | | | |
| Does Not Apply or Do Not Know | 8 | 1.92 | 2.09 | | | | | |
| No Response | 34 | 8.17 | | | | | | |

Total Responses : 416

22. I think that this is a good school.

| Response | Num Responses | Raw % | Adjusted % | | 20 | 40 | 60 | 80 |
|-------------------------------|---------------|-------|------------|--|----|----|----|----|
| Strongly Agree | 142 | 34.13 | 37.08 | | | | | |
| Agree | 198 | 47.60 | 51.70 | | | | | |
| Disagree | 29 | 6.97 | 7.57 | | | | | |
| Strongly Disagree | 10 | 2.40 | 2.61 | | | | | |
| Does Not Apply or Do Not Know | 4 | 0.96 | 1.04 | | | | | |
| No Response | 33 | 7.93 | | | | | | |

Total Responses : 416

23. I am happy with the way students treat each other.

| Response | Num Responses | Raw % | Adjusted % | | 20 | 40 | 60 | 80 |
|-------------------------------|---------------|-------|------------|--|----|----|----|----|
| Strongly Agree | 32 | 7.69 | 8.36 | | | | | |
| Agree | 197 | 47.36 | 51.44 | | | | | |
| Disagree | 107 | 25.72 | 27.94 | | | | | |
| Strongly Disagree | 41 | 9.86 | 10.70 | | | | | |
| Does Not Apply or Do Not Know | 6 | 1.44 | 1.57 | | | | | |
| No Response | 33 | 7.93 | | | | | | |

Total Responses : 416

24. It's easy to make friends at my school.

| Response | Num Responses | Raw % | Adjusted % | | 20 | 40 | 60 | 80 |
|-------------------------------|---------------|-------|------------|--|----|----|----|----|
| Strongly Agree | 100 | 24.04 | 26.04 | | | | | |
| Agree | 210 | 50.48 | 54.69 | | | | | |
| Disagree | 53 | 12.74 | 13.80 | | | | | |
| Strongly Disagree | 17 | 4.09 | 4.43 | | | | | |
| Does Not Apply or Do Not Know | 4 | 0.96 | 1.04 | | | | | |
| No Response | 32 | 7.69 | | | | | | |

Total Responses : 416

25. I am involved in a St. Albert the Great School extra-curricular activity (music, drama, sports, Pow of the Pen, yearbook, Geography Bee, Classroom of Champions, Morning Show, etc.).

| Response | Num Responses | Raw % | Adjusted % | | 20 | 40 | 60 | 80 |
|-------------|---------------|-------|------------|--|----|----|----|----|
| Yes | 320 | 76.92 | 83.12 | | | | | |
| No | 65 | 15.62 | 16.88 | | | | | |
| No Response | 31 | 7.45 | | | | | | |

Total Responses : 416

26. I am happy with the number of extra-curricular activities I can participate in.

| Response | Num Responses | Raw % | Adjusted % | | 20 | 40 | 60 | 80 |
|-------------------------------|---------------|-------|------------|--|----|----|----|----|
| Strongly Agree | 156 | 37.50 | 41.16 | | | | | |
| Agree | 166 | 39.90 | 43.80 | | | | | |
| Disagree | 29 | 6.97 | 7.65 | | | | | |
| Strongly Disagree | 8 | 1.92 | 2.11 | | | | | |
| Does Not Apply or Do Not Know | 20 | 4.81 | 5.28 | | | | | |
| No Response | 37 | 8.89 | | | | | | |

Total Responses : 416

27. I am happy with the amount that students can plan and take part in school events and activities.

| Response | Num Responses | Raw % | Adjusted % | | 20 | 40 | 60 | 80 |
|-------------------------------|---------------|-------|------------|--|----|----|----|----|
| Strongly Agree | 111 | 26.68 | 29.06 | | | | | |
| Agree | 224 | 53.85 | 58.64 | | | | | |
| Disagree | 26 | 6.25 | 6.81 | | | | | |
| Strongly Disagree | 3 | 0.72 | 0.79 | | | | | |
| Does Not Apply or Do Not Know | 18 | 4.33 | 4.71 | | | | | |
| No Response | 34 | 8.17 | | | | | | |

Total Responses : 416

28. My classes challenge me.

| Response | Num Responses | Raw % | Adjusted % | | 20 | 40 | 60 | 80 |
|-------------------------------|---------------|-------|------------|--|----|----|----|----|
| Strongly Agree | 89 | 21.39 | 23.24 | | | | | |
| Agree | 229 | 55.05 | 59.79 | | | | | |
| Disagree | 51 | 12.26 | 13.32 | | | | | |
| Strongly Disagree | 10 | 2.40 | 2.61 | | | | | |
| Does Not Apply or Do Not Know | 4 | 0.96 | 1.04 | | | | | |
| No Response | 33 | 7.93 | | | | | | |

Total Responses : 416

29. My classes meet my needs.

| Response | Num Responses | Raw % | Adjusted % | | 20 | 40 | 60 | 80 |
|-------------------------------|---------------|-------|------------|--|----|----|----|----|
| Strongly Agree | 77 | 18.51 | 20.32 | | | | | |
| Agree | 262 | 62.98 | 69.13 | | | | | |
| Disagree | 32 | 7.69 | 8.44 | | | | | |
| Strongly Disagree | 2 | 0.48 | 0.53 | | | | | |
| Does Not Apply or Do Not Know | 6 | 1.44 | 1.58 | | | | | |
| No Response | 37 | 8.89 | | | | | | |

Total Responses : 416

30. I have opportunities to choose my own projects.

| Response | Num Responses | Raw % | Adjusted % | | 20 | 40 | 60 | 80 |
|----------------|---------------|-------|------------|--|----|----|----|----|
| Strongly Agree | 30 | 7.21 | 7.83 | | | | | |
| Agree | 158 | 37.98 | 41.25 | | | | | |

| | | | | |
|-------------------------------|-----|-------|-------|--|
| Disagree | 136 | 32.69 | 35.51 | |
| Strongly Disagree | 41 | 9.86 | 10.70 | |
| Does Not Apply or Do Not Know | 18 | 4.33 | 4.70 | |
| No Response | 33 | 7.93 | | |

Total Responses : 416

31. I feel like I am in charge of what I learn.

| Response | Num Responses | Raw % | Adjusted % | |
|-------------------------------|---------------|-------|------------|--|
| Strongly Agree | 50 | 12.02 | 13.19 | |
| Agree | 134 | 32.21 | 35.36 | |
| Disagree | 131 | 31.49 | 34.56 | |
| Strongly Disagree | 52 | 12.50 | 13.72 | |
| Does Not Apply or Do Not Know | 12 | 2.88 | 3.17 | |
| No Response | 37 | 8.89 | | |

Total Responses : 416

32. My teachers make an effort to show me another way to learn the material if I don't understand the time.

| Response | Num Responses | Raw % | Adjusted % | |
|-------------------------------|---------------|-------|------------|--|
| Strongly Agree | 119 | 28.61 | 31.23 | |
| Agree | 187 | 44.95 | 49.08 | |
| Disagree | 51 | 12.26 | 13.39 | |
| Strongly Disagree | 13 | 3.12 | 3.41 | |
| Does Not Apply or Do Not Know | 11 | 2.64 | 2.89 | |
| No Response | 35 | 8.41 | | |

Total Responses : 416

33. I understand how to apply what I learn at school to real-life situations.

| Response | Num Responses | Raw % | Adjusted % | |
|-------------------------------|---------------|-------|------------|--|
| Strongly Agree | 71 | 17.07 | 18.59 | |
| Agree | 220 | 52.88 | 57.59 | |
| Disagree | 59 | 14.18 | 15.45 | |
| Strongly Disagree | 11 | 2.64 | 2.88 | |
| Does Not Apply or Do Not Know | 21 | 5.05 | 5.50 | |
| No Response | 34 | 8.17 | | |

Total Responses : 416

34. I feel successful at this school.

| Response | Num Responses | Raw % | Adjusted % | |
|-------------------------------|---------------|-------|------------|--|
| Strongly Agree | 126 | 30.29 | 33.07 | |
| Agree | 207 | 49.76 | 54.33 | |
| Disagree | 32 | 7.69 | 8.40 | |
| Strongly Disagree | 6 | 1.44 | 1.57 | |
| Does Not Apply or Do Not Know | 10 | 2.40 | 2.62 | |
| No Response | 35 | 8.41 | | |

Total Responses : 416

35. This school is preparing me for high school.

| Response | Num Responses | Raw % | Adjusted % | |
|----------------|---------------|-------|------------|--|
| Strongly Agree | 127 | 30.53 | 33.42 | |
| Agree | 192 | 46.15 | 50.53 | |
| Disagree | 37 | 8.89 | 9.74 | |

| | | | | |
|-------------------------------|----|------|------|--|
| Strongly Disagree | 9 | 2.16 | 2.37 | |
| Does Not Apply or Do Not Know | 15 | 3.61 | 3.95 | |
| No Response | 36 | 8.65 | | |

Total Responses : 416

36. Homework helps me to learn.

| Response | Num Responses | Raw % | Adjusted % | |
|-------------------------------|---------------|-------|------------|--|
| Strongly Agree | 44 | 10.58 | 11.49 | |
| Agree | 209 | 50.24 | 54.57 | |
| Disagree | 72 | 17.31 | 18.80 | |
| Strongly Disagree | 52 | 12.50 | 13.58 | |
| Does Not Apply or Do Not Know | 6 | 1.44 | 1.57 | |
| No Response | 33 | 7.93 | | |

Total Responses : 416

37. There is an appropriate amount of project work.

| Response | Num Responses | Raw % | Adjusted % | |
|-------------------------------|---------------|-------|------------|--|
| Strongly Agree | 60 | 14.42 | 15.71 | |
| Agree | 234 | 56.25 | 61.26 | |
| Disagree | 62 | 14.90 | 16.23 | |
| Strongly Disagree | 21 | 5.05 | 5.50 | |
| Does Not Apply or Do Not Know | 5 | 1.20 | 1.31 | |
| No Response | 34 | 8.17 | | |

Total Responses : 416

38. Projects require too much help from my parents.

| Response | Num Responses | Raw % | Adjusted % | |
|-------------------------------|---------------|-------|------------|--|
| Strongly Agree | 18 | 4.33 | 4.70 | |
| Agree | 64 | 15.38 | 16.71 | |
| Disagree | 212 | 50.96 | 55.35 | |
| Strongly Disagree | 73 | 17.55 | 19.06 | |
| Does Not Apply or Do Not Know | 16 | 3.85 | 4.18 | |
| No Response | 33 | 7.93 | | |

Total Responses : 416

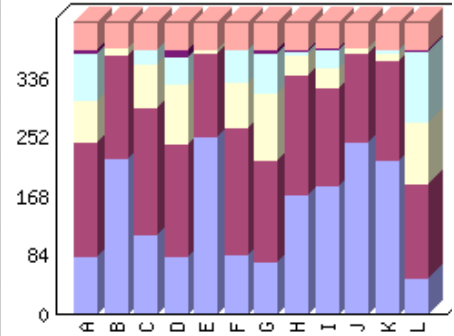
39. This school encourages me to work to the best of my ability.

| Response | Num Responses | Raw % | Adjusted % | |
|-------------------------------|---------------|-------|------------|--|
| Strongly Agree | 128 | 30.77 | 33.51 | |
| Agree | 210 | 50.48 | 54.97 | |
| Disagree | 29 | 6.97 | 7.59 | |
| Strongly Disagree | 6 | 1.44 | 1.57 | |
| Does Not Apply or Do Not Know | 9 | 2.16 | 2.36 | |
| No Response | 34 | 8.17 | | |

Total Responses : 416

40. I have learned new and useful things in:

| Category | Strongly Agree | Agree | Disagree | Strongly Disagree | Does Not Apply or Do Not Know | NR | Legend |
|-------------------------|----------------|-------|----------|-------------------|-------------------------------|----|--------|
| Art | 82 | 162 | 60 | 69 | 4 | 39 | A |
| Computer | 222 | 148 | 10 | 1 | 0 | 35 | B |
| Language Arts / English | 113 | 181 | 62 | 20 | 1 | 39 | C |
| Library Skills | 81 | 162 | 84 | 39 | 12 | 38 | D |
| Mathematics | 253 | 119 | 4 | 2 | 0 | 38 | E |
| Music | 85 | 182 | 63 | 46 | 1 | 39 | F |
| Physical Education | 73 | 146 | 97 | 56 | 5 | 39 | G |
| Reading / Literature | 169 | 171 | 30 | 4 | 3 | 39 | H |
| Religion | 183 | 139 | 29 | 25 | 3 | 37 | I |
| Science / Health | 245 | 126 | 8 | 1 | 0 | 36 | J |
| Social Studies | 220 | 142 | 9 | 7 | 0 | 38 | K |
| Spanish | 50 | 136 | 87 | 101 | 3 | 39 | L |
| Color | | | | | | | |



Total Responses : 416

Art

| Response | Num Responses | Raw % | Adjusted % | |
|-------------------------------|---------------|-------|------------|--|
| Strongly Agree | 82 | 19.71 | 21.75 | |
| Agree | 162 | 38.94 | 42.97 | |
| Disagree | 60 | 14.42 | 15.92 | |
| Strongly Disagree | 69 | 16.59 | 18.30 | |
| Does Not Apply or Do Not Know | 4 | 0.96 | 1.06 | |
| No Response | 39 | 9.38 | | |

Total Responses : 416

Computer

| Response | Num Responses | Raw % | Adjusted % | |
|-------------------------------|---------------|-------|------------|--|
| Strongly Agree | 222 | 53.37 | 58.27 | |
| Agree | 148 | 35.58 | 38.85 | |
| Disagree | 10 | 2.40 | 2.62 | |
| Strongly Disagree | 1 | 0.24 | 0.26 | |
| Does Not Apply or Do Not Know | 0 | 0.00 | 0.00 | |
| No Response | 35 | 8.41 | | |

Total Responses : 416

Language Arts / English

| Response | Num Responses | Raw % | Adjusted % | |
|-------------------|---------------|-------|------------|--|
| Strongly Agree | 113 | 27.16 | 29.97 | |
| Agree | 181 | 43.51 | 48.01 | |
| Disagree | 62 | 14.90 | 16.45 | |
| Strongly Disagree | 20 | 4.81 | 5.31 | |

| | | | | |
|-------------------------------|----|------|------|--|
| Does Not Apply or Do Not Know | 1 | 0.24 | 0.27 | |
| No Response | 39 | 9.38 | | |

Total Responses : 416

Library Skills

| Response | Num Responses | Raw % | Adjusted % | |
|-------------------------------|---------------|-------|------------|--|
| Strongly Agree | 81 | 19.47 | 21.43 | |
| Agree | 162 | 38.94 | 42.86 | |
| Disagree | 84 | 20.19 | 22.22 | |
| Strongly Disagree | 39 | 9.38 | 10.32 | |
| Does Not Apply or Do Not Know | 12 | 2.88 | 3.17 | |
| No Response | 38 | 9.13 | | |

Total Responses : 416

Mathematics

| Response | Num Responses | Raw % | Adjusted % | |
|-------------------------------|---------------|-------|------------|--|
| Strongly Agree | 253 | 60.82 | 66.93 | |
| Agree | 119 | 28.61 | 31.48 | |
| Disagree | 4 | 0.96 | 1.06 | |
| Strongly Disagree | 2 | 0.48 | 0.53 | |
| Does Not Apply or Do Not Know | 0 | 0.00 | 0.00 | |
| No Response | 38 | 9.13 | | |

Total Responses : 416

Music

| Response | Num Responses | Raw % | Adjusted % | |
|-------------------------------|---------------|-------|------------|--|
| Strongly Agree | 85 | 20.43 | 22.55 | |
| Agree | 182 | 43.75 | 48.28 | |
| Disagree | 63 | 15.14 | 16.71 | |
| Strongly Disagree | 46 | 11.06 | 12.20 | |
| Does Not Apply or Do Not Know | 1 | 0.24 | 0.27 | |
| No Response | 39 | 9.38 | | |

Total Responses : 416

Physical Education

| Response | Num Responses | Raw % | Adjusted % | |
|-------------------------------|---------------|-------|------------|--|
| Strongly Agree | 73 | 17.55 | 19.36 | |
| Agree | 146 | 35.10 | 38.73 | |
| Disagree | 97 | 23.32 | 25.73 | |
| Strongly Disagree | 56 | 13.46 | 14.85 | |
| Does Not Apply or Do Not Know | 5 | 1.20 | 1.33 | |
| No Response | 39 | 9.38 | | |

Total Responses : 416

Reading / Literature

| Response | Num Responses | Raw % | Adjusted % | |
|-------------------------------|---------------|-------|------------|--|
| Strongly Agree | 169 | 40.62 | 44.83 | |
| Agree | 171 | 41.11 | 45.36 | |
| Disagree | 30 | 7.21 | 7.96 | |
| Strongly Disagree | 4 | 0.96 | 1.06 | |
| Does Not Apply or Do Not Know | 3 | 0.72 | 0.80 | |

| | | | | |
|-------------|----|------|--|--|
| No Response | 39 | 9.38 | | |
|-------------|----|------|--|--|

Total Responses : 416

Religion

| Response | Num Responses | Raw % | Adjusted % | |
|-------------------------------|---------------|-------|------------|--|
| Strongly Agree | 183 | 43.99 | 48.28 | |
| Agree | 139 | 33.41 | 36.68 | |
| Disagree | 29 | 6.97 | 7.65 | |
| Strongly Disagree | 25 | 6.01 | 6.60 | |
| Does Not Apply or Do Not Know | 3 | 0.72 | 0.79 | |
| No Response | 37 | 8.89 | | |

Total Responses : 416

Science / Health

| Response | Num Responses | Raw % | Adjusted % | |
|-------------------------------|---------------|-------|------------|--|
| Strongly Agree | 245 | 58.89 | 64.47 | |
| Agree | 126 | 30.29 | 33.16 | |
| Disagree | 8 | 1.92 | 2.11 | |
| Strongly Disagree | 1 | 0.24 | 0.26 | |
| Does Not Apply or Do Not Know | 0 | 0.00 | 0.00 | |
| No Response | 36 | 8.65 | | |

Total Responses : 416

Social Studies

| Response | Num Responses | Raw % | Adjusted % | |
|-------------------------------|---------------|-------|------------|--|
| Strongly Agree | 220 | 52.88 | 58.20 | |
| Agree | 142 | 34.13 | 37.57 | |
| Disagree | 9 | 2.16 | 2.38 | |
| Strongly Disagree | 7 | 1.68 | 1.85 | |
| Does Not Apply or Do Not Know | 0 | 0.00 | 0.00 | |
| No Response | 38 | 9.13 | | |

Total Responses : 416

Spanish

| Response | Num Responses | Raw % | Adjusted % | |
|-------------------------------|---------------|-------|------------|--|
| Strongly Agree | 50 | 12.02 | 13.26 | |
| Agree | 136 | 32.69 | 36.07 | |
| Disagree | 87 | 20.91 | 23.08 | |
| Strongly Disagree | 101 | 24.28 | 26.79 | |
| Does Not Apply or Do Not Know | 3 | 0.72 | 0.80 | |
| No Response | 39 | 9.38 | | |

Total Responses : 416

41. It is easy for me to use the school library.

| Response | Num Responses | Raw % | Adjusted % | |
|-------------------------------|---------------|-------|------------|--|
| Strongly Agree | 157 | 37.74 | 41.53 | |
| Agree | 195 | 46.88 | 51.59 | |
| Disagree | 18 | 4.33 | 4.76 | |
| Strongly Disagree | 6 | 1.44 | 1.59 | |
| Does Not Apply or Do Not Know | 2 | 0.48 | 0.53 | |
| No Response | 38 | 9.13 | | |

Total Responses : 416

42. It is easy for me to use the school computer lab.

| Response | Num Responses | Raw % | Adjusted % | | 20 | 40 | 60 | 80 |
|-------------------------------|---------------|-------|------------|--|----|----|----|----|
| Strongly Agree | 175 | 42.07 | 46.17 | | | | | |
| Agree | 190 | 45.67 | 50.13 | | | | | |
| Disagree | 11 | 2.64 | 2.90 | | | | | |
| Strongly Disagree | 2 | 0.48 | 0.53 | | | | | |
| Does Not Apply or Do Not Know | 1 | 0.24 | 0.26 | | | | | |
| No Response | 37 | 8.89 | | | | | | |

Total Responses : 416

43. I am happy with the selection of books and other materials in the school library.

| Response | Num Responses | Raw % | Adjusted % | | 20 | 40 | 60 | 80 |
|-------------------------------|---------------|-------|------------|--|----|----|----|----|
| Strongly Agree | 97 | 23.32 | 25.53 | | | | | |
| Agree | 185 | 44.47 | 48.68 | | | | | |
| Disagree | 69 | 16.59 | 18.16 | | | | | |
| Strongly Disagree | 22 | 5.29 | 5.79 | | | | | |
| Does Not Apply or Do Not Know | 7 | 1.68 | 1.84 | | | | | |
| No Response | 36 | 8.65 | | | | | | |

Total Responses : 416

44. The school grounds are kept clean.

| Response | Num Responses | Raw % | Adjusted % | | 20 | 40 | 60 | 80 |
|-------------------------------|---------------|-------|------------|--|----|----|----|----|
| Strongly Agree | 103 | 24.76 | 27.25 | | | | | |
| Agree | 218 | 52.40 | 57.67 | | | | | |
| Disagree | 40 | 9.62 | 10.58 | | | | | |
| Strongly Disagree | 8 | 1.92 | 2.12 | | | | | |
| Does Not Apply or Do Not Know | 9 | 2.16 | 2.38 | | | | | |
| No Response | 38 | 9.13 | | | | | | |

Total Responses : 416

45. The school buildings are kept clean and in good repair.

| Response | Num Responses | Raw % | Adjusted % | | 20 | 40 | 60 | 80 |
|-------------------------------|---------------|-------|------------|--|----|----|----|----|
| Strongly Agree | 128 | 30.77 | 34.41 | | | | | |
| Agree | 213 | 51.20 | 57.26 | | | | | |
| Disagree | 21 | 5.05 | 5.65 | | | | | |
| Strongly Disagree | 5 | 1.20 | 1.34 | | | | | |
| Does Not Apply or Do Not Know | 5 | 1.20 | 1.34 | | | | | |
| No Response | 44 | 10.58 | | | | | | |

Total Responses : 416

46. The classroom supplies and materials help me learn.

| Response | Num Responses | Raw % | Adjusted % | | 20 | 40 | 60 | 80 |
|-------------------------------|---------------|-------|------------|--|----|----|----|----|
| Strongly Agree | 80 | 19.23 | 21.22 | | | | | |
| Agree | 232 | 55.77 | 61.54 | | | | | |
| Disagree | 42 | 10.10 | 11.14 | | | | | |
| Strongly Disagree | 6 | 1.44 | 1.59 | | | | | |
| Does Not Apply or Do Not Know | 17 | 4.09 | 4.51 | | | | | |
| No Response | 39 | 9.38 | | | | | | |

Total Responses : 416

47. In general, I am happy about the school buildings, supplies, and upkeep at my school.

| Response | Num Responses | Raw % | Adjusted % | | 20 | 40 | 60 | 80 |
|-------------------------------|---------------|-------|------------|--|----|----|----|----|
| Strongly Agree | 106 | 25.48 | 28.04 | | | | | |
| Agree | 239 | 57.45 | 63.23 | | | | | |
| Disagree | 20 | 4.81 | 5.29 | | | | | |
| Strongly Disagree | 5 | 1.20 | 1.32 | | | | | |
| Does Not Apply or Do Not Know | 8 | 1.92 | 2.12 | | | | | |
| No Response | 38 | 9.13 | | | | | | |

Total Responses : 416

48. Students of this school obtain a good understanding of their Catholic faith.

| Response | Num Responses | Raw % | Adjusted % | | 20 | 40 | 60 | 80 |
|-------------------------------|---------------|-------|------------|--|----|----|----|----|
| Strongly Agree | 117 | 28.12 | 31.12 | | | | | |
| Agree | 201 | 48.32 | 53.46 | | | | | |
| Disagree | 45 | 10.82 | 11.97 | | | | | |
| Strongly Disagree | 11 | 2.64 | 2.93 | | | | | |
| Does Not Apply or Do Not Know | 2 | 0.48 | 0.53 | | | | | |
| No Response | 40 | 9.62 | | | | | | |

Total Responses : 416

49. Being a Catholic school is important to everyone at this school: students, parents, faculty and administration.

| Response | Num Responses | Raw % | Adjusted % | | 20 | 40 | 60 | 80 |
|-------------------------------|---------------|-------|------------|--|----|----|----|----|
| Strongly Agree | 139 | 33.41 | 36.77 | | | | | |
| Agree | 172 | 41.35 | 45.50 | | | | | |
| Disagree | 48 | 11.54 | 12.70 | | | | | |
| Strongly Disagree | 12 | 2.88 | 3.17 | | | | | |
| Does Not Apply or Do Not Know | 7 | 1.68 | 1.85 | | | | | |
| No Response | 38 | 9.13 | | | | | | |

Total Responses : 416

50. Our school is preparing students to be good Catholics.

| Response | Num Responses | Raw % | Adjusted % | | 20 | 40 | 60 | 80 |
|-------------------------------|---------------|-------|------------|--|----|----|----|----|
| Strongly Agree | 143 | 34.38 | 38.13 | | | | | |
| Agree | 198 | 47.60 | 52.80 | | | | | |
| Disagree | 24 | 5.77 | 6.40 | | | | | |
| Strongly Disagree | 7 | 1.68 | 1.87 | | | | | |
| Does Not Apply or Do Not Know | 3 | 0.72 | 0.80 | | | | | |
| No Response | 41 | 9.86 | | | | | | |

Total Responses : 416

51. The school liturgies are helpful and meaningful for the students.

| Response | Num Responses | Raw % | Adjusted % | | 20 | 40 | 60 | 80 |
|-------------------------------|---------------|-------|------------|--|----|----|----|----|
| Strongly Agree | 88 | 21.15 | 23.34 | | | | | |
| Agree | 207 | 49.76 | 54.91 | | | | | |
| Disagree | 53 | 12.74 | 14.06 | | | | | |
| Strongly Disagree | 12 | 2.88 | 3.18 | | | | | |
| Does Not Apply or Do Not Know | 17 | 4.09 | 4.51 | | | | | |
| No Response | 39 | 9.38 | | | | | | |

Total Responses : 416

52. At this school, students have the opportunity to talk to adults about their beliefs and values.

| Response | Num Responses | Raw % | Adjusted % | | 20 | 40 | 60 | 80 |
|----------|---------------|-------|------------|--|----|----|----|----|
|----------|---------------|-------|------------|--|----|----|----|----|

| | | | | |
|--------------------------------------|-----|-------|-------|--|
| Strongly Agree | 54 | 12.98 | 14.32 | |
| Agree | 170 | 40.87 | 45.09 | |
| Disagree | 102 | 24.52 | 27.06 | |
| Strongly Disagree | 29 | 6.97 | 7.69 | |
| Does Not Apply or Do Not Know | 22 | 5.29 | 5.84 | |
| No Response | 39 | 9.38 | | |

Total Responses : 416

53. Religion class is seen as important by the students of this school.

| Response | Num Responses | Raw % | Adjusted % | |
|--------------------------------------|---------------|-------|------------|--|
| Strongly Agree | 64 | 15.38 | 17.11 | |
| Agree | 164 | 39.42 | 43.85 | |
| Disagree | 90 | 21.63 | 24.06 | |
| Strongly Disagree | 42 | 10.10 | 11.23 | |
| Does Not Apply or Do Not Know | 14 | 3.37 | 3.74 | |
| No Response | 42 | 10.10 | | |

Total Responses : 416

54. Religion class is seen as important by the parents of this school.

| Response | Num Responses | Raw % | Adjusted % | |
|--------------------------------------|---------------|-------|------------|--|
| Strongly Agree | 138 | 33.17 | 37.20 | |
| Agree | 173 | 41.59 | 46.63 | |
| Disagree | 21 | 5.05 | 5.66 | |
| Strongly Disagree | 9 | 2.16 | 2.43 | |
| Does Not Apply or Do Not Know | 30 | 7.21 | 8.09 | |
| No Response | 45 | 10.82 | | |

Total Responses : 416

55. Religion class is seen as important by the faculty of this school.

| Response | Num Responses | Raw % | Adjusted % | |
|--------------------------------------|---------------|-------|------------|--|
| Strongly Agree | 135 | 32.45 | 35.71 | |
| Agree | 182 | 43.75 | 48.15 | |
| Disagree | 23 | 5.53 | 6.08 | |
| Strongly Disagree | 10 | 2.40 | 2.65 | |
| Does Not Apply or Do Not Know | 28 | 6.73 | 7.41 | |
| No Response | 38 | 9.13 | | |

Total Responses : 416

56. I believe that the school follows its' mission.

| Response | Num Responses | Raw % | Adjusted % | |
|--------------------------------------|---------------|-------|------------|--|
| Strongly Agree | 73 | 17.55 | 19.31 | |
| Agree | 216 | 51.92 | 57.14 | |
| Disagree | 61 | 14.66 | 16.14 | |
| Strongly Disagree | 15 | 3.61 | 3.97 | |
| Does Not Apply or Do Not Know | 13 | 3.12 | 3.44 | |
| No Response | 38 | 9.13 | | |

Total Responses : 416

57. I am pleased with the overall direction of the school.

| Response | Num Responses | Raw % | Adjusted % | |
|-----------------------|---------------|-------|------------|--|
| Strongly Agree | 79 | 18.99 | 21.07 | |

| | | | | | |
|-------------------------------|-----|-------|-------|--|--|
| Agree | 235 | 56.49 | 62.67 | | |
| Disagree | 34 | 8.17 | 9.07 | | |
| Strongly Disagree | 13 | 3.12 | 3.47 | | |
| Does Not Apply or Do Not Know | 14 | 3.37 | 3.73 | | |
| No Response | 41 | 9.86 | | | |

Total Responses : 416

58. I am aware that the school created a school improvement plan in 2006 and is currently following it

| Response | Num Responses | Raw % | Adjusted % | | |
|-------------------------------|---------------|-------|------------|--|--|
| Strongly Agree | 55 | 13.22 | 14.59 | | |
| Agree | 160 | 38.46 | 42.44 | | |
| Disagree | 66 | 15.87 | 17.51 | | |
| Strongly Disagree | 24 | 5.77 | 6.37 | | |
| Does Not Apply or Do Not Know | 72 | 17.31 | 19.10 | | |
| No Response | 39 | 9.38 | | | |

Total Responses : 416

59. I evaluate my own written work according to a teacher provided rubric.

| Response | Num Responses | Raw % | Adjusted % | | |
|-------------------------------|---------------|-------|------------|--|--|
| Strongly Agree | 89 | 21.39 | 23.61 | | |
| Agree | 221 | 53.12 | 58.62 | | |
| Disagree | 31 | 7.45 | 8.22 | | |
| Strongly Disagree | 7 | 1.68 | 1.86 | | |
| Does Not Apply or Do Not Know | 29 | 6.97 | 7.69 | | |
| No Response | 39 | 9.38 | | | |

Total Responses : 416

60. I know how to edit written work.

| Response | Num Responses | Raw % | Adjusted % | | |
|-------------------------------|---------------|-------|------------|--|--|
| Strongly Agree | 104 | 25.00 | 27.66 | | |
| Agree | 240 | 57.69 | 63.83 | | |
| Disagree | 19 | 4.57 | 5.05 | | |
| Strongly Disagree | 5 | 1.20 | 1.33 | | |
| Does Not Apply or Do Not Know | 8 | 1.92 | 2.13 | | |
| No Response | 40 | 9.62 | | | |

Total Responses : 416

61. I edit other classmate's written work.

| Response | Num Responses | Raw % | Adjusted % | | |
|-------------------------------|---------------|-------|------------|--|--|
| Strongly Agree | 59 | 14.18 | 15.61 | | |
| Agree | 190 | 45.67 | 50.26 | | |
| Disagree | 73 | 17.55 | 19.31 | | |
| Strongly Disagree | 27 | 6.49 | 7.14 | | |
| Does Not Apply or Do Not Know | 29 | 6.97 | 7.67 | | |
| No Response | 38 | 9.13 | | | |

Total Responses : 416

62. I select work to be placed in my writing portfolio.

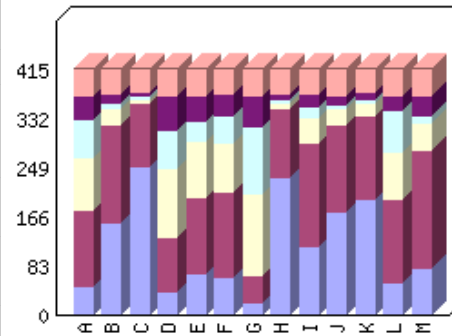
| Response | Num Responses | Raw % | Adjusted % | | |
|----------------|---------------|-------|------------|--|--|
| Strongly Agree | 36 | 8.65 | 9.52 | | |
| Agree | 112 | 26.92 | 29.63 | | |

| | | | | |
|--------------------------------------|-----|-------|-------|--|
| Disagree | 125 | 30.05 | 33.07 | |
| Strongly Disagree | 56 | 13.46 | 14.81 | |
| Does Not Apply or Do Not Know | 49 | 11.78 | 12.96 | |
| No Response | 38 | 9.13 | | |

Total Responses : 416

63. This school year, I have used the writing process and completed a final written product in:

| Category | Strongly Agree | Agree | Disagree | Strongly Disagree | Does Not Apply or Do Not Know | NR | Legend |
|---|----------------|-------|----------|-------------------|-------------------------------|----|--------|
| Art | 49 | 128 | 90 | 63 | 40 | 46 | A |
| Computer | 154 | 167 | 27 | 10 | 15 | 43 | B |
| Language Arts / English | 251 | 107 | 7 | 4 | 7 | 40 | C |
| Library Skills | 38 | 93 | 115 | 65 | 59 | 46 | D |
| Mathematics | 69 | 130 | 94 | 35 | 42 | 46 | E |
| Music | 62 | 144 | 83 | 49 | 34 | 44 | F |
| Physical Education | 19 | 48 | 137 | 114 | 52 | 46 | G |
| Reading / Literature | 232 | 118 | 9 | 5 | 10 | 42 | H |
| Religion | 115 | 177 | 42 | 19 | 19 | 44 | I |
| Science | 174 | 146 | 29 | 6 | 16 | 45 | J |
| Social Studies | 195 | 141 | 22 | 5 | 13 | 40 | K |
| Spanish | 53 | 141 | 82 | 69 | 26 | 45 | L |
| 64. I know and understand what Catholic social justice teachings are. | 77 | 200 | 46 | 13 | 35 | 45 | M |
| Color | | | | | | | |



Total Responses : 416

Art

| Response | Num Responses | Raw % | Adjusted % | |
|--------------------------------------|---------------|-------|------------|--|
| Strongly Agree | 49 | 11.78 | 13.24 | |
| Agree | 128 | 30.77 | 34.59 | |
| Disagree | 90 | 21.63 | 24.32 | |
| Strongly Disagree | 63 | 15.14 | 17.03 | |
| Does Not Apply or Do Not Know | 40 | 9.62 | 10.81 | |
| No Response | 46 | 11.06 | | |

Total Responses : 416

Computer

| Response | Num Responses | Raw % | Adjusted % | |
|-----------------------|---------------|-------|------------|--|
| Strongly Agree | 154 | 37.02 | 41.29 | |

| | | | | |
|-------------------------------|-----|-------|-------|--|
| Agree | 167 | 40.14 | 44.77 | |
| Disagree | 27 | 6.49 | 7.24 | |
| Strongly Disagree | 10 | 2.40 | 2.68 | |
| Does Not Apply or Do Not Know | 15 | 3.61 | 4.02 | |
| No Response | 43 | 10.34 | | |

Total Responses : 416

Language Arts / English

| Response | Num Responses | Raw % | Adjusted % | |
|-------------------------------|---------------|-------|------------|--|
| Strongly Agree | 251 | 60.34 | 66.76 | |
| Agree | 107 | 25.72 | 28.46 | |
| Disagree | 7 | 1.68 | 1.86 | |
| Strongly Disagree | 4 | 0.96 | 1.06 | |
| Does Not Apply or Do Not Know | 7 | 1.68 | 1.86 | |
| No Response | 40 | 9.62 | | |

Total Responses : 416

Library Skills

| Response | Num Responses | Raw % | Adjusted % | |
|-------------------------------|---------------|-------|------------|--|
| Strongly Agree | 38 | 9.13 | 10.27 | |
| Agree | 93 | 22.36 | 25.14 | |
| Disagree | 115 | 27.64 | 31.08 | |
| Strongly Disagree | 65 | 15.62 | 17.57 | |
| Does Not Apply or Do Not Know | 59 | 14.18 | 15.95 | |
| No Response | 46 | 11.06 | | |

Total Responses : 416

Mathematics

| Response | Num Responses | Raw % | Adjusted % | |
|-------------------------------|---------------|-------|------------|--|
| Strongly Agree | 69 | 16.59 | 18.65 | |
| Agree | 130 | 31.25 | 35.14 | |
| Disagree | 94 | 22.60 | 25.41 | |
| Strongly Disagree | 35 | 8.41 | 9.46 | |
| Does Not Apply or Do Not Know | 42 | 10.10 | 11.35 | |
| No Response | 46 | 11.06 | | |

Total Responses : 416

Music

| Response | Num Responses | Raw % | Adjusted % | |
|-------------------------------|---------------|-------|------------|--|
| Strongly Agree | 62 | 14.90 | 16.67 | |
| Agree | 144 | 34.62 | 38.71 | |
| Disagree | 83 | 19.95 | 22.31 | |
| Strongly Disagree | 49 | 11.78 | 13.17 | |
| Does Not Apply or Do Not Know | 34 | 8.17 | 9.14 | |
| No Response | 44 | 10.58 | | |

Total Responses : 416

Physical Education

| Response | Num Responses | Raw % | Adjusted % | |
|----------------|---------------|-------|------------|--|
| Strongly Agree | 19 | 4.57 | 5.14 | |
| Agree | 48 | 11.54 | 12.97 | |

| | | | | | |
|-------------------------------|-----|-------|-------|--|--|
| Disagree | 137 | 32.93 | 37.03 | | |
| Strongly Disagree | 114 | 27.40 | 30.81 | | |
| Does Not Apply or Do Not Know | 52 | 12.50 | 14.05 | | |
| No Response | 46 | 11.06 | | | |

Total Responses : 416

Reading / Literature

| Response | Num Responses | Raw % | Adjusted % | | 20 | 40 | 60 | 80 |
|-------------------------------|---------------|-------|------------|--|----|----|----|----|
| Strongly Agree | 232 | 55.77 | 62.03 | | | | | |
| Agree | 118 | 28.37 | 31.55 | | | | | |
| Disagree | 9 | 2.16 | 2.41 | | | | | |
| Strongly Disagree | 5 | 1.20 | 1.34 | | | | | |
| Does Not Apply or Do Not Know | 10 | 2.40 | 2.67 | | | | | |
| No Response | 42 | 10.10 | | | | | | |

Total Responses : 416

Religion

| Response | Num Responses | Raw % | Adjusted % | | 20 | 40 | 60 | 80 |
|-------------------------------|---------------|-------|------------|--|----|----|----|----|
| Strongly Agree | 115 | 27.64 | 30.91 | | | | | |
| Agree | 177 | 42.55 | 47.58 | | | | | |
| Disagree | 42 | 10.10 | 11.29 | | | | | |
| Strongly Disagree | 19 | 4.57 | 5.11 | | | | | |
| Does Not Apply or Do Not Know | 19 | 4.57 | 5.11 | | | | | |
| No Response | 44 | 10.58 | | | | | | |

Total Responses : 416

Science

| Response | Num Responses | Raw % | Adjusted % | | 20 | 40 | 60 | 80 |
|-------------------------------|---------------|-------|------------|--|----|----|----|----|
| Strongly Agree | 174 | 41.83 | 46.90 | | | | | |
| Agree | 146 | 35.10 | 39.35 | | | | | |
| Disagree | 29 | 6.97 | 7.82 | | | | | |
| Strongly Disagree | 6 | 1.44 | 1.62 | | | | | |
| Does Not Apply or Do Not Know | 16 | 3.85 | 4.31 | | | | | |
| No Response | 45 | 10.82 | | | | | | |

Total Responses : 416

Social Studies

| Response | Num Responses | Raw % | Adjusted % | | 20 | 40 | 60 | 80 |
|-------------------------------|---------------|-------|------------|--|----|----|----|----|
| Strongly Agree | 195 | 46.88 | 51.86 | | | | | |
| Agree | 141 | 33.89 | 37.50 | | | | | |
| Disagree | 22 | 5.29 | 5.85 | | | | | |
| Strongly Disagree | 5 | 1.20 | 1.33 | | | | | |
| Does Not Apply or Do Not Know | 13 | 3.12 | 3.46 | | | | | |
| No Response | 40 | 9.62 | | | | | | |

Total Responses : 416

Spanish

| Response | Num Responses | Raw % | Adjusted % | | 20 | 40 | 60 | 80 |
|----------------|---------------|-------|------------|--|----|----|----|----|
| Strongly Agree | 53 | 12.74 | 14.29 | | | | | |
| Agree | 141 | 33.89 | 38.01 | | | | | |
| Disagree | 82 | 19.71 | 22.10 | | | | | |

| | | | | |
|--------------------------------------|----|-------|-------|--|
| Strongly Disagree | 69 | 16.59 | 18.60 | |
| Does Not Apply or Do Not Know | 26 | 6.25 | 7.01 | |
| No Response | 45 | 10.82 | | |

Total Responses : 416

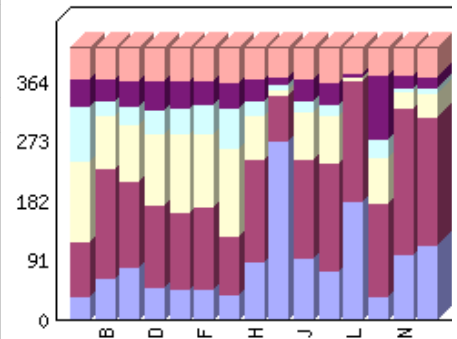
64. I know and understand what Catholic social justice teachings are.

| Response | Num Responses | Raw % | Adjusted % | |
|--------------------------------------|----------------------|--------------|-------------------|--|
| Strongly Agree | 77 | 18.51 | 20.75 | |
| Agree | 200 | 48.08 | 53.91 | |
| Disagree | 46 | 11.06 | 12.40 | |
| Strongly Disagree | 13 | 3.12 | 3.50 | |
| Does Not Apply or Do Not Know | 35 | 8.41 | 9.43 | |
| No Response | 45 | 10.82 | | |

Total Responses : 416

65. We discuss Catholic social justice principles in:

| Category | Strongly Agree | Agree | Disagree | Strongly Disagree | Does Not Apply or Do Not Know | NR | Legend |
|---|----------------|-------|----------|-------------------|-------------------------------|----|--------|
| Art | 36 | 84 | 124 | 84 | 40 | 48 | A |
| Computer | 63 | 169 | 81 | 22 | 34 | 47 | B |
| Language Arts / English | 79 | 133 | 87 | 27 | 40 | 50 | C |
| Library Skills | 49 | 126 | 110 | 37 | 45 | 49 | D |
| Mathematics | 45 | 120 | 120 | 39 | 43 | 49 | E |
| Music | 47 | 126 | 112 | 45 | 37 | 49 | F |
| Physical Education | 39 | 88 | 136 | 60 | 42 | 51 | G |
| Reading / Literature | 89 | 157 | 67 | 22 | 33 | 48 | H |
| Religion | 273 | 70 | 10 | 9 | 11 | 43 | I |
| Science | 93 | 154 | 73 | 15 | 33 | 48 | J |
| Social Studies | 74 | 167 | 72 | 17 | 33 | 53 | K |
| 66. I believe serving others is an important part of being Catholic. | 182 | 185 | 4 | 2 | 5 | 38 | L |
| 67. The staff at our school listens to my opinion when planning service projects. | 36 | 142 | 70 | 28 | 100 | 40 | M |
| 68. I enjoy serving others. | 101 | 224 | 25 | 6 | 19 | 41 | N |
| 69. This school promotes serving others. | 114 | 196 | 36 | 8 | 19 | 43 | O |
| Color | | | | | | | |



Total Responses : 416

Art

| Response | Num Responses | Raw % | Adjusted % | |
|-------------------------------|---------------|-------|------------|--|
| Strongly Agree | 36 | 8.65 | 9.78 | |
| Agree | 84 | 20.19 | 22.83 | |
| Disagree | 124 | 29.81 | 33.70 | |
| Strongly Disagree | 84 | 20.19 | 22.83 | |
| Does Not Apply or Do Not Know | 40 | 9.62 | 10.87 | |
| No Response | 48 | 11.54 | | |

Total Responses : 416

Computer

| Response | Num Responses | Raw % | Adjusted % | | 20 | 40 | 60 | 80 |
|-------------------------------|---------------|-------|------------|--|----|----|----|----|
| Strongly Agree | 63 | 15.14 | 17.07 | | | | | |
| Agree | 169 | 40.62 | 45.80 | | | | | |
| Disagree | 81 | 19.47 | 21.95 | | | | | |
| Strongly Disagree | 22 | 5.29 | 5.96 | | | | | |
| Does Not Apply or Do Not Know | 34 | 8.17 | 9.21 | | | | | |
| No Response | 47 | 11.30 | | | | | | |

Total Responses : 416

Language Arts / English

| Response | Num Responses | Raw % | Adjusted % | | 20 | 40 | 60 | 80 |
|-------------------------------|---------------|-------|------------|--|----|----|----|----|
| Strongly Agree | 79 | 18.99 | 21.58 | | | | | |
| Agree | 133 | 31.97 | 36.34 | | | | | |
| Disagree | 87 | 20.91 | 23.77 | | | | | |
| Strongly Disagree | 27 | 6.49 | 7.38 | | | | | |
| Does Not Apply or Do Not Know | 40 | 9.62 | 10.93 | | | | | |
| No Response | 50 | 12.02 | | | | | | |

Total Responses : 416

Library Skills

| Response | Num Responses | Raw % | Adjusted % | | 20 | 40 | 60 | 80 |
|-------------------------------|---------------|-------|------------|--|----|----|----|----|
| Strongly Agree | 49 | 11.78 | 13.35 | | | | | |
| Agree | 126 | 30.29 | 34.33 | | | | | |
| Disagree | 110 | 26.44 | 29.97 | | | | | |
| Strongly Disagree | 37 | 8.89 | 10.08 | | | | | |
| Does Not Apply or Do Not Know | 45 | 10.82 | 12.26 | | | | | |
| No Response | 49 | 11.78 | | | | | | |

Total Responses : 416

Mathematics

| Response | Num Responses | Raw % | Adjusted % | | 20 | 40 | 60 | 80 |
|-------------------------------|---------------|-------|------------|--|----|----|----|----|
| Strongly Agree | 45 | 10.82 | 12.26 | | | | | |
| Agree | 120 | 28.85 | 32.70 | | | | | |
| Disagree | 120 | 28.85 | 32.70 | | | | | |
| Strongly Disagree | 39 | 9.38 | 10.63 | | | | | |
| Does Not Apply or Do Not Know | 43 | 10.34 | 11.72 | | | | | |
| No Response | 49 | 11.78 | | | | | | |

Total Responses : 416

Music

| Response | Num Responses | Raw % | Adjusted % | | 20 | 40 | 60 | 80 |
|-------------------------------|---------------|-------|------------|--|----|----|----|----|
| Strongly Agree | 47 | 11.30 | 12.81 | | | | | |
| Agree | 126 | 30.29 | 34.33 | | | | | |
| Disagree | 112 | 26.92 | 30.52 | | | | | |
| Strongly Disagree | 45 | 10.82 | 12.26 | | | | | |
| Does Not Apply or Do Not Know | 37 | 8.89 | 10.08 | | | | | |
| No Response | 49 | 11.78 | | | | | | |

Total Responses : 416

Physical Education

| Response | Num Responses | Raw % | Adjusted % | |
|-------------------------------|---------------|-------|------------|--|
| Strongly Agree | 39 | 9.38 | 10.68 | |
| Agree | 88 | 21.15 | 24.11 | |
| Disagree | 136 | 32.69 | 37.26 | |
| Strongly Disagree | 60 | 14.42 | 16.44 | |
| Does Not Apply or Do Not Know | 42 | 10.10 | 11.51 | |
| No Response | 51 | 12.26 | | |

Total Responses : 416

Reading / Literature

| Response | Num Responses | Raw % | Adjusted % | |
|-------------------------------|---------------|-------|------------|--|
| Strongly Agree | 89 | 21.39 | 24.18 | |
| Agree | 157 | 37.74 | 42.66 | |
| Disagree | 67 | 16.11 | 18.21 | |
| Strongly Disagree | 22 | 5.29 | 5.98 | |
| Does Not Apply or Do Not Know | 33 | 7.93 | 8.97 | |
| No Response | 48 | 11.54 | | |

Total Responses : 416

Religion

| Response | Num Responses | Raw % | Adjusted % | |
|-------------------------------|---------------|-------|------------|--|
| Strongly Agree | 273 | 65.62 | 73.19 | |
| Agree | 70 | 16.83 | 18.77 | |
| Disagree | 10 | 2.40 | 2.68 | |
| Strongly Disagree | 9 | 2.16 | 2.41 | |
| Does Not Apply or Do Not Know | 11 | 2.64 | 2.95 | |
| No Response | 43 | 10.34 | | |

Total Responses : 416

Science

| Response | Num Responses | Raw % | Adjusted % | |
|-------------------------------|---------------|-------|------------|--|
| Strongly Agree | 93 | 22.36 | 25.27 | |
| Agree | 154 | 37.02 | 41.85 | |
| Disagree | 73 | 17.55 | 19.84 | |
| Strongly Disagree | 15 | 3.61 | 4.08 | |
| Does Not Apply or Do Not Know | 33 | 7.93 | 8.97 | |
| No Response | 48 | 11.54 | | |

Total Responses : 416

Social Studies

| Response | Num Responses | Raw % | Adjusted % | |
|-------------------------------|---------------|-------|------------|--|
| Strongly Agree | 74 | 17.79 | 20.39 | |
| Agree | 167 | 40.14 | 46.01 | |
| Disagree | 72 | 17.31 | 19.83 | |
| Strongly Disagree | 17 | 4.09 | 4.68 | |
| Does Not Apply or Do Not Know | 33 | 7.93 | 9.09 | |
| No Response | 53 | 12.74 | | |

Total Responses : 416

66. I believe serving others is an important part of being Catholic.

| Response | Num Responses | Raw % | Adjusted % | |
|----------------|---------------|-------|------------|--|
| Strongly Agree | 182 | 43.75 | 48.15 | |

| | | | | | |
|-------------------------------|-----|-------|-------|--|--|
| Agree | 185 | 44.47 | 48.94 | | |
| Disagree | 4 | 0.96 | 1.06 | | |
| Strongly Disagree | 2 | 0.48 | 0.53 | | |
| Does Not Apply or Do Not Know | 5 | 1.20 | 1.32 | | |
| No Response | 38 | 9.13 | | | |

Total Responses : 416

67. The staff at our school listens to my opinion when planning service projects.

| Response | Num Responses | Raw % | Adjusted % | | 20 | 40 | 60 | 80 |
|-------------------------------|---------------|-------|------------|--|----|----|----|----|
| Strongly Agree | 36 | 8.65 | 9.57 | | | | | |
| Agree | 142 | 34.13 | 37.77 | | | | | |
| Disagree | 70 | 16.83 | 18.62 | | | | | |
| Strongly Disagree | 28 | 6.73 | 7.45 | | | | | |
| Does Not Apply or Do Not Know | 100 | 24.04 | 26.60 | | | | | |
| No Response | 40 | 9.62 | | | | | | |

Total Responses : 416

68. I enjoy serving others.

| Response | Num Responses | Raw % | Adjusted % | | 20 | 40 | 60 | 80 |
|-------------------------------|---------------|-------|------------|--|----|----|----|----|
| Strongly Agree | 101 | 24.28 | 26.93 | | | | | |
| Agree | 224 | 53.85 | 59.73 | | | | | |
| Disagree | 25 | 6.01 | 6.67 | | | | | |
| Strongly Disagree | 6 | 1.44 | 1.60 | | | | | |
| Does Not Apply or Do Not Know | 19 | 4.57 | 5.07 | | | | | |
| No Response | 41 | 9.86 | | | | | | |

Total Responses : 416

69. This school promotes serving others.

| Response | Num Responses | Raw % | Adjusted % | | 20 | 40 | 60 | 80 |
|-------------------------------|---------------|-------|------------|--|----|----|----|----|
| Strongly Agree | 114 | 27.40 | 30.56 | | | | | |
| Agree | 196 | 47.12 | 52.55 | | | | | |
| Disagree | 36 | 8.65 | 9.65 | | | | | |
| Strongly Disagree | 8 | 1.92 | 2.14 | | | | | |
| Does Not Apply or Do Not Know | 19 | 4.57 | 5.09 | | | | | |
| No Response | 43 | 10.34 | | | | | | |

Total Responses : 416